

City of West Plains
1910 Holiday Lane
West Plains, Mo.
417.256.7176

December 30, 2025

To: Sam Anselm, City Administrator
Kellie Mayers City Clerk

From: Shayne Eades, Utilities Director

Re: Mini Excavator

Executive Summary

The purpose of this request is to authorize the purchase of a 2025 Takeuchi TB235-2 excavator

Discussion

The excavator is a 2025 Takeuchi TB235-2, and it is proposed to replace the Electric Department's backhoe. This equipment includes a three-year warranty, compared to the two-year coverage offered by other manufacturers. Additionally, maintenance can be performed locally at Hayden Equipment, which will reduce downtime and provide better access to parts and repairs. The excavator will also offer greater versatility and can be used efficiently in alleys and easements across all departments.

Fiscal Impact

The department sold the Case backhoe for \$30,000 and the Vermeer micro trencher for \$70,000, which together cover the purchase cost of \$56,000.

BID TABULATION

Item Description: Mini Excavator

Date: 12/15/2025

Budget:

	Hayden Machinery	Luby Equipment	Heritage Tractor	Heritage Tractor	Ozark Machinery	Edgeller & Harper	FabickCat
Make/Model	2025 Takeuchi TB235-2	2024 Case CX37C	2025 John Deere 350 MY25	2025 John Deere 30 P-Tier Compact Excavator	Bobcat E35	Kubota KX003-4R3A	Caterpillar 303-07
Price	\$56,000.00	\$49,400.00	\$58,175.00	\$50,770.00	\$51,672.20	\$50,494.74	\$63,403.64
Options							
Hydraulic Thumb	x	x	x	x	x	x	x
18in Bucket	x	x	x	x	x	x	x
HP	24.4	23.7	22	22	24.8	24.8	24.7
Dig Depth	10ft 7.8 in	10ft 3in	10ft	9ft 2in	11ft 1in	10ft 6in	9ft 8in
Reach	17ft 2.9 in	17ft 5in	17ft 1in	16ft 1in	17ft 11in	16ft 10in	17ft 2in
Tail Swing	4ft 4.4 in	5in	34in	31in	3.2in	Not Listed	30.5in
Warranty	3 Year/3000 Hour	2 Year/3000 Hour	2 Year/3000 Hour	2 Year/3000 Hour	2 Year/2000 Hour	2 Year/	2 Year/2000 Hour

HYDRAULIC EXCAVATOR

takeuchi
From World First to World Leader

TB235-2



Product Features & Specifications

ENGINE

- U.S. EPA Final Tier 4
- Automatic Fuel Bleed System
- Dual Element Air Filter
- Automatic Idle

ELECTRICAL

- LCD Multi-Informational Display (Canopy)
- 5.7" Multi-Informational Display (Cab)
- Sealed Rocker Switches
- 12 volt System with 55 amp Alternator
- Halogen Work Lights: Two Forward Facing
- Engine Preheat
- Hour Meter
- Travel Alarm
- Horn

TAKEUCHI FLEET MANAGEMENT

- 2 Year Standard Service
- Minimize Downtime
- Remote Diagnostics
- Utilization Tracking
- Proactive Maintenance
- Control Costs

UNDERCARRIAGE AND FRAME

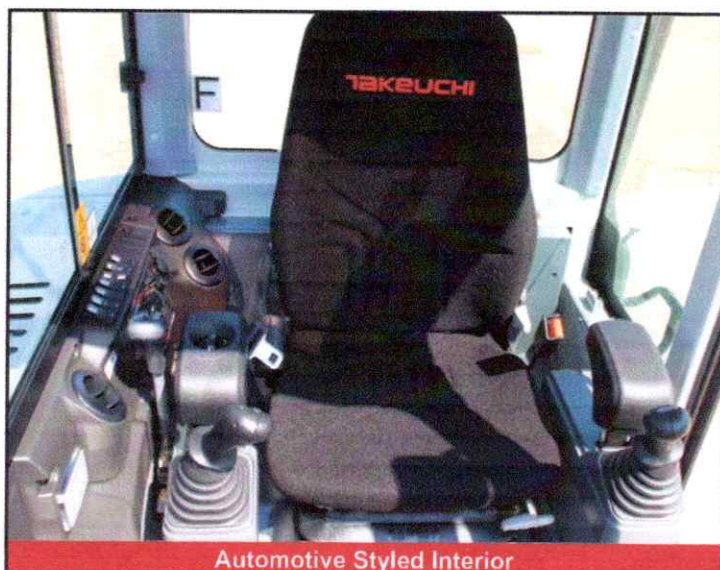
- Triple Flanged Track Rollers
- Automatic Load Sensing Two-Speed Travel
- Sloped Frame with Open Centers
- Large Wrap Around Counterweight
- 11.8" Rubber Tracks
- Heavy Duty Dozer Blade with Float
- Power Angle Blade with Float, and Bolt-on Cutting Edge (optional)

OPERATOR'S STATION

- ROPS / TOPS / OPG Four Post Canopy
- Deluxe High Back Suspension Seat
- Adjustable Arm Rests
- 2" Retractable Seat Belt
- 3" Retractable Seat Belt (optional)
- Cab with A/C, Heat, Defrost, Windshield Wiper and Washer, Skylight w/ Sunshade, AM / FM / MP3 Radio, 12v Power Outlet (optional)

HYDRAULIC & WORKING EQUIPMENT

- Variable Displacement, Open Center Hydraulics
- Cushioned Boom and Swing Cylinders
- Hydraulic Pilot Controls
- Proportional Auxiliary Controls with Detent
- Auxiliary Flow Adjustable from Operator's Seat
- Hydraulic Reservoir with Fluid Level Sight Gauge
- Primary Auxiliary Hydraulic Circuit Plumbed to Mid-Arm
- Multiple Attachment Presets
- Flow Selector Valve
- Pattern Change Valve (ISO or SAE)
- Pilot Accumulator
- Long Arm with Integrated Thumb Mount
- Main Boom Cylinder Guard
- Dual Pin Position Bucket (optional)
- Mechanical Bucket Quick Coupler (optional)
- Main Pin Hydraulic Thumb (optional)



TOUGH, POWERFUL, RELIABLE



Wraparound Counterweight



All Steel Construction



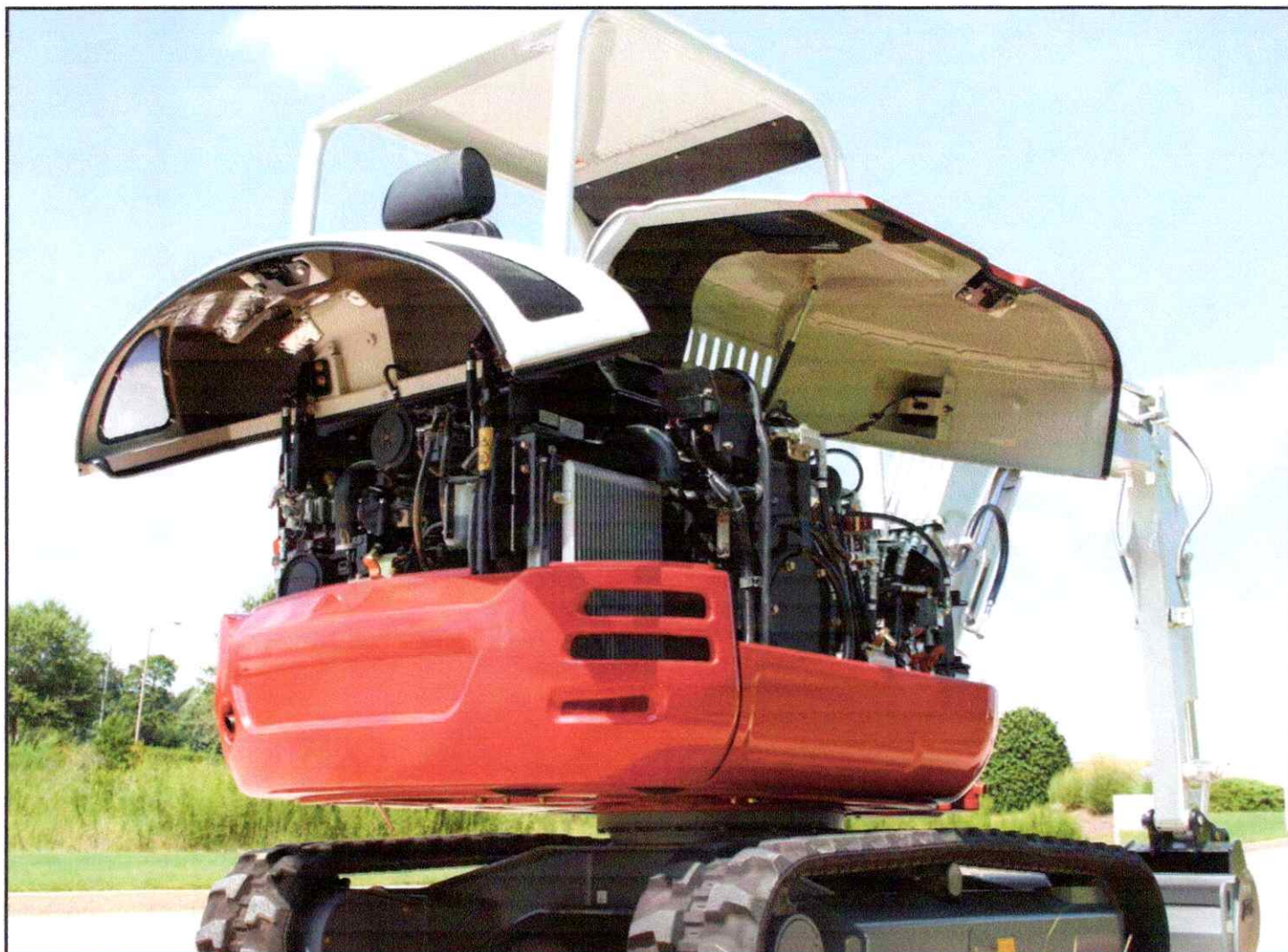
Cushioned Cylinders



Triple Flanged Track Rollers

Ease of transport and an excellent working range make the TB235-2 a great choice for owner operators, rental companies, utilities, and general contractors. The TB235-2 has all steel construction, a spacious operator station with available cab with air conditioner, an automotive styled interior, outstanding multi-function operation, pattern change valve and cushioned boom and swing cylinders for enhanced performance comfort, and durability. The TB235-2 has a U.S. EPA Final Tier

compliant engine that has no DPF for low maintenance operation. Additional features include an automatic fuel bleed system, dual element air filters, large wrap around counterweight, and exceptional serviceability due to the engine and side hood that open overhead for greater convenience. The operator is protected by a four post ROPS/TOPS/OPG Level 1 canopy or available cab for greater peace of mind and comfort.



Lockable service hoods lift overhead for outstanding maintenance access.

OPERATING PERFORMANCE

Operating Weight - Canopy	7,418 lb	(3,365 kg)
Operating Weight - Cab	7,639 lb	(3,465 kg)
Maximum Bucket Breakout Force	9,127 lb	(4,140 kg)
Maximum Arm Digging Force	3,889 lb	(1,764 kg)
Arm Length	4 ft 9.0 in	(1,445 mm)
Slew Speed	9.3 rpm	
Traction Force	9,112 lb	(4,130 kg)
Ground Pressure - Canopy	4.4 psi	(30.4 kPa)
Ground Pressure - Cab	4.6 psi	(31.4 kPa)
Max Travel Speed		
Low Range	1.7 mph	(2.8 km/h)
High Range	2.6 mph	(4.2 km/h)

HYDRAULIC SYSTEM

Total Hydraulic Flow	28.6 gpm	(108.4 Lpm)
Auxiliary Flow - Primary Circuit	15.8 gpm	(60.0 Lpm)
Hydraulic System Pressure	3,553 psi	(24.5 MPa)

ENGINE

Make / Model	Yanmar / 3TNV88F	
Displacement	100.0 cu in	(1.6 L)
Horsepower @ 2,400 rpm	24.4 hp	(18.2 kW)
Maximum Torque @ 1,440 rpm	68 ft-lb	(92.2 Nm)

FLUID CAPACITIES

Engine Lubrication	5.0 qt	(4.7 L)
Cooling System	4.2 qt	(4.0 L)
Fuel Tank Capacity	12.2 gal	(46.0 L)
Fuel Consumption (65% of Full Load)	.90 gal/hr	(3.4 L/hr)
Hydraulic Reservoir Capacity	9.2 gal	(35.0 L)
Hydraulic System Capacity	18.0 gal	(68.0 L)



Multi-Informational Display



Pilot Controls



Deluxe High Back Suspension Seat



Electronic Throttle Control

TB235-2 Lifting Capacities at Ground Level*

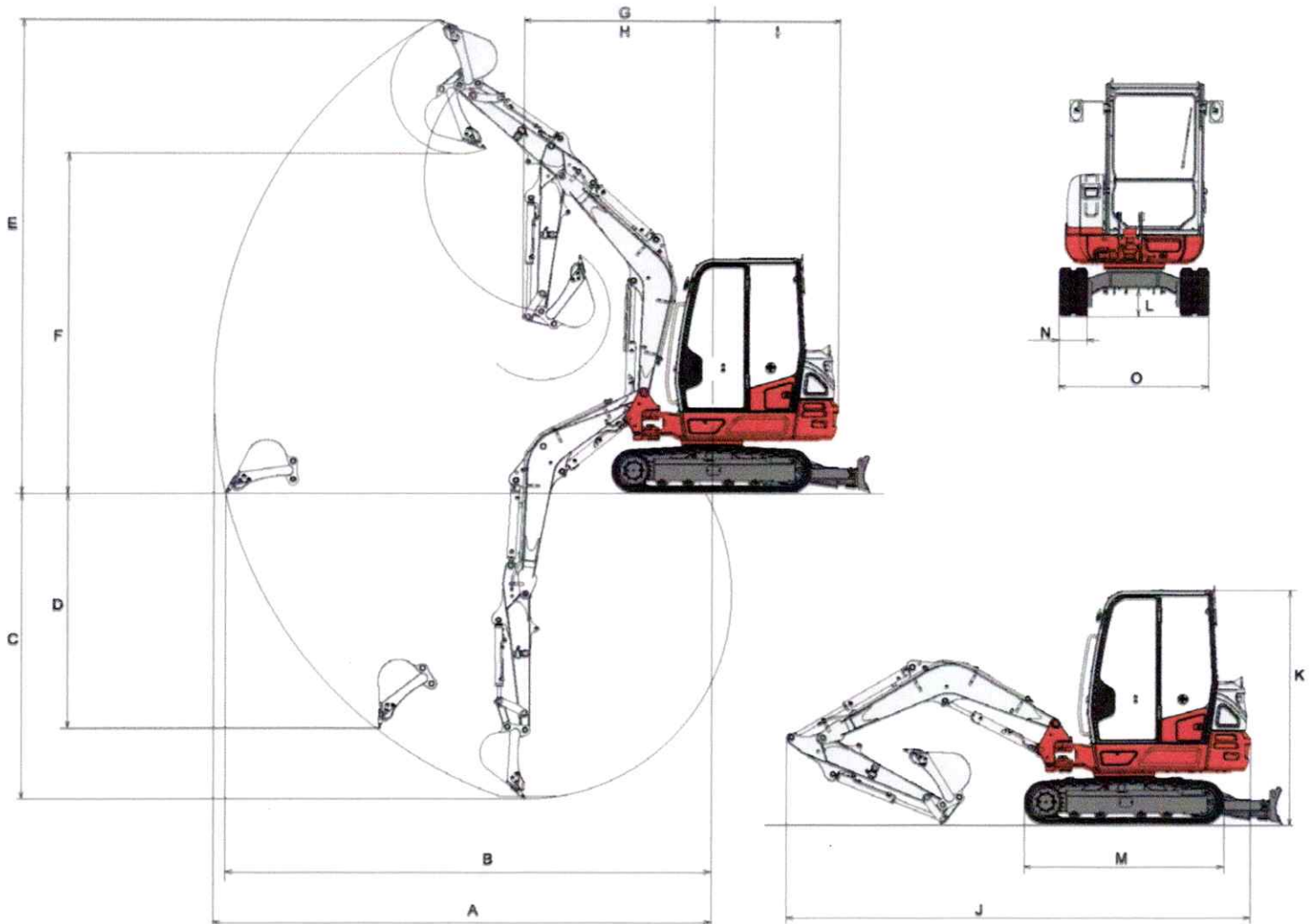
Lift Point Radius from Rotation Axis		9 ft (2,743 mm)		12 ft (3,657 mm)	
	Lifting Capacities Over Front, Blade Down	3,081 lb	(1,398 kg)	2,079 lb	(943 kg)
	Lifting Capacities Over Side	1,690 lb	(767 kg)	1,134 lb	(514 kg)

* Ratings based on ISO10567 and do not exceed 87% of hydraulic lift or 75% of tipping load.

ATTACHMENTS

Takeuchi now offers attachments for all of your Takeuchi equipment. See your authorized Takeuchi dealer for additional information and attachment options.

TB235-2 Compact Excavator



MACHINE DIMENSIONS

A Maximum Reach	17 ft 2.9 in	(5,255 mm)
B Maximum Reach at Ground Level	16 ft 10.0 in	(5,130 mm)
C Maximum Digging Depth	10 ft 7.8 in	(3,245 mm)
D Maximum Vertical Digging Depth	8 ft 2.2 in	(2,495 mm)
E Maximum Dig Height	16 ft 5.2 in	(5,010 mm)
F Maximum Dumping Height	11 ft 9.5 in	(3,595 mm)
G Front Swing Radius	6 ft 6.9 in	(2,005 mm)
H Front Swing Radius with Boom Offset	5 ft 5.4 in	(1,660 mm)
I Tail Swing (Slew) Radius	4 ft 4.4 in	(1,330 mm)
J Transport Length	16 ft 0.9 in	(4,900 mm)
K Transport Height	8 ft 2.8 in	(2,510 mm)
L Ground Clearance	11.6 in	(295 mm)
M Undercarriage Length	6 ft 11.1 in	(2,110 mm)
N Track Width (Rubber)	11.8 in	(300 mm)
O Undercarriage Width	5 ft 2.2 in	(1,580 mm)



2 YEAR
2,000 HOUR
FULL MACHINE
WARRANTY



© 2018 Takeuchi Manufacturing (U.S.), Ltd. All Rights Reserved. Printed in the U.S.A.
In accordance with our established policy of continued improvement, specifications and
features are subject to change without notice. Pictures may show options other than

TAKEUCHI



TO: City Of West Plains, MO

SALES ORDER

DATE: 11/26/2025
VALID THRU: 12/11/2025

ATTN: Shayne Eades
EMAIL:
PHONE:

QTY.	DESCRIPTION	PRICE
1	2025 Takeuchi TB235-2 Cab	\$56,000.00
1	Takeuchi Wain Roy style Quick Coupler	included
1	Takeuchi Hydraulic Thumb	included
1	Takeuchi 18" Bucket	included

FOB POINT: West Plains, MO



SUBTOTAL: \$56,000.00
TAXABLE TOTAL: \$56,000.00
SALES TAX: exempt

FREIGHT:
DOWN PAYMENT:

TOTAL PRICE: \$56,000.00

WARRANTY: 3 Year 3000 Hour

Derek Danahy
Cell: 417-372-3597
Email: derekd@myhayden.coi
Hayden Machinery, Inc
1747 US-63
West Plains, MO 65775

APPROVED BY: _____
SIGNATURE: _____
TITLE: _____
DATE: _____

*SUBJECT TO APPROVAL
ALL QUOTES GOOD FOR 15 DAYS

1155 S Kansas Expressway
Springfield, MO 65807
Mobile: 417-761-1014

QUOTE

DATE:	12/5/2025
Quoted Date	
Customer ID	0
Valid Until:	12/31/2025
Prepared by:	Kolten Buckner
Cell Phone:	417-761-1014

CUSTOMER

City of West Plains

DELIVERY LOCATION, if different than billing

[illegible]

Sign to Authorize purchase

Date

Thank You for allowing Luby Equipment the opportunity to quote on your equipment needs. If you need anything else, please do not hesitate to contact me.





ENGINE

Model	Yanmar 3TNV88F-ESHYB
Emissions Certification	Tier 4 Final
Fuel	Diesel
Cylinders	3
Displacement	100.2 in ³ (1 642 cc)
Fuel injection	Mechanical w/electronic governor
Gross horsepower – SAE J1995 @ 2200 RPM:	24.4 hp (18.2 kW)
Net horsepower – SAE J1349 @ 2200 RPM:	23.7 hp (17.7 kW)
Maximum Engine Torque @ 1200 RPM:	69.4 lb ft (94.1 Nm)
Cooling	Water-cooled

DRIVETRAIN

Travel speeds:	
1st	1.6 mph (2.5 kph)
2nd	2.6 mph (4.2 kph)
Maximum traction force	6,835 lb (3 100 kg)
Gradeability	30° (58%)
Ground pressure:	
Canopy	N/A
Cab	4.83 psi (0.34 kgf/cm ²)

ELECTRICAL

Voltage	12 Volts
Alternator rating	55 amp
Battery	1 x 12 V x 70 Ah 750 CCA

OPERATOR ENVIRONMENT

ROPS/FOPS four post canopy or enclosed cab; ISO 6396:2008 sound pressure level LpA=75dB (A); Pilot operated hand controls and foot pedals; Adjustable seat w/seat belt; Arm rests; 12V socket.

Display includes:

Engine oil pressure warning lamp; Battery charging warning lamp; Engine preheat pilot lamp; Engine coolant temp warning lamp; Air cleaner warning lamp; Overload warning lamp; Travel speed pilot lamp; Fuel low level warning lamp; Air cleaner warning lamp; Hyd. quick coupler lock lamp; Engine coolant temp gauge; Fuel gauge and Hour meter.

OPERATING WEIGHT

Canopy operating weight:

Short arm 7,990 lb (3 625 kg)
Long arm w/additional counterweight
8,350 lb (3 790 kg)

Cab operating weight:

Short arm 8,300 lb (3 765 kg)
Long arm w/additional counterweight
8,660 lb (3 930 kg)

NOTE: w/rubber tracks/no quick coupler/bucket/ fluids/full of fuel/165 lb operator.

HYDRAULICS

Main pumps: Variable displacement tandem axial piston pump + gear pump
Max rated flow: 2 x 9.9 + 6.1 gpm
(2 x 37.4 + 23.1 L/min)

Auxiliary flow @ 3,278 psi (226 bar):

Primary 16.0 gpm (60.5 L/min)
Secondary 16.0 gpm (60.5 L/min)

System relief pressure:

Standard 3,271 psi (226 bar)
Overload relief valve 3,556 psi (245 bar)

Pilot control hydraulic system:

Pump Gear Pump
Maximum capacity 2.6 gpm (9.9 L/min)

Control valves:

Pilot control for boom, arm, bucket, and swing
Mechanical control for left/right travel
and backfill blade

Swing motor:

Fixed displacement
axial piston motor
Automatic spring applied
hydraulic released brake

Travel motor:

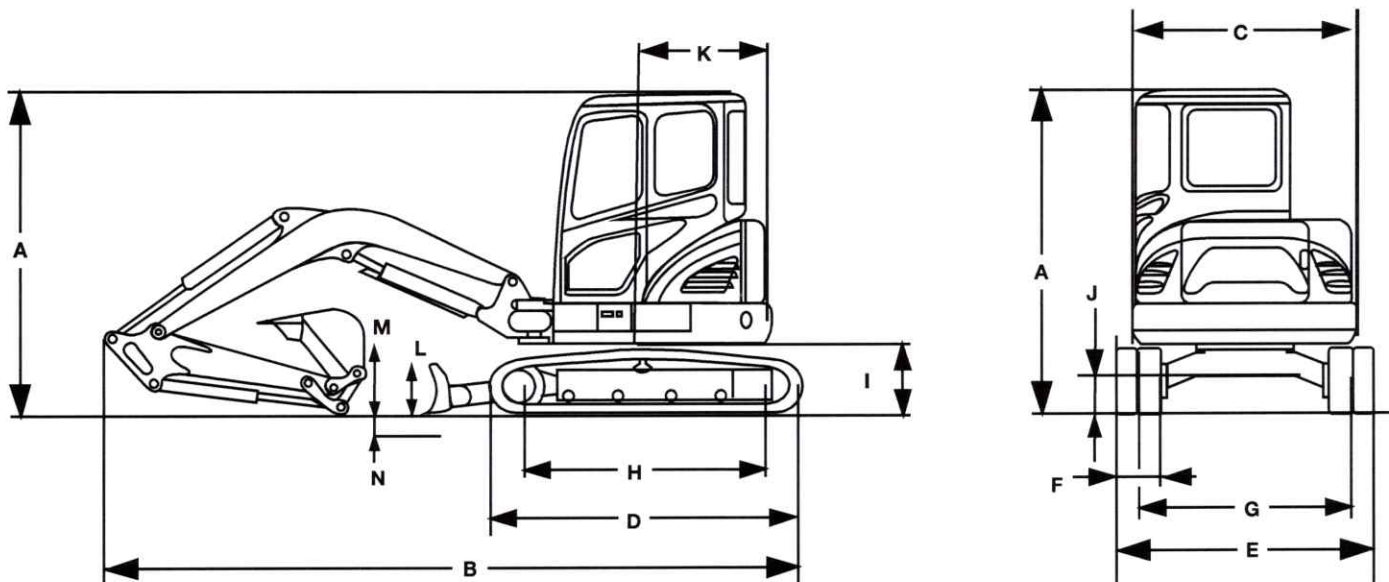
Variable displacement axial piston
2-stage planetary
Automatic spring applied
hydraulic released brake

SERVICE CAPACITIES

Fuel tank	10.5 gal (40 L)
Hydraulic tank:	
Refill capacity	9.8 gal (37 L)
Total system	15.9 gal (60 L)
Engine oil w/filter change	1.8 gal (6.7 L)
Radiator	1.5 gal (5.5 L)

OTHER SPECIFICATIONS

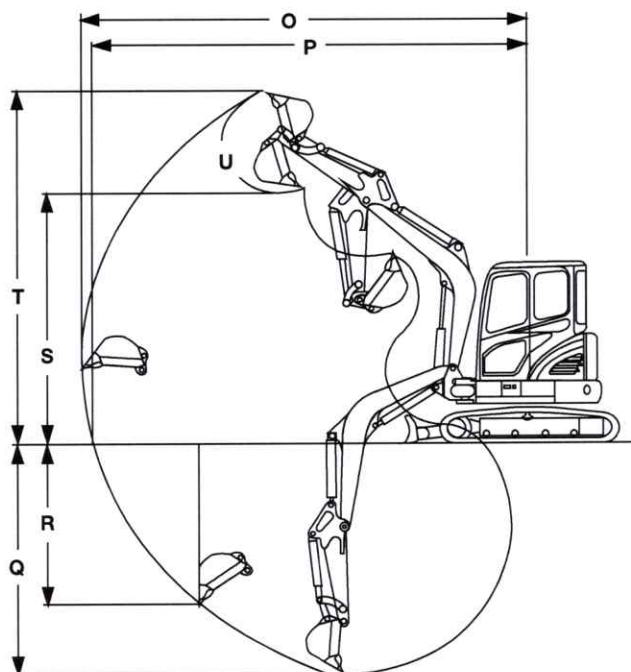
Swing speed	0 – 9.5 RPM
Undercarriage:	
Track rollers	1 upper/4 lower each
Boom:	
Swing	75° left/50° right
Length	8 ft 2 in (2.5 m)
Arm:	
Standard length	4 ft 3 in (1.3 m)
Long arm length	5 ft 3 in (1.6 m)



Line drawings are for illustrative purpose only
and may not be exact representation of unit.

DIMENSIONS

	4 ft 3 in (1.3 m) Arm
A. Overall height	8 ft 2 in (2 500 mm)
B. Overall transport length	15 ft 9 in (4 790 mm)
C. Width of upper structure	5 ft 0 in (1 530 mm)
D. Track overall length	7 ft 0 in (2 130 mm)
E. Track overall width	5 ft 9 in (1 740 mm)
F. Track shoe width	12 in (300 mm)
G. Track gauge	4 ft 9 in (1 440 mm)
H. Center to center - idler to sprocket	5 ft 7 in (1 700 mm)
I. Upper structure ground clearance	1 ft 9 in (540 mm)
J. Minimum ground clearance	11 in (290 mm)
K. Tail swing radius:	
Standard counterweight	2 ft 10 in (870 mm)
Additional counterweight	3 ft 3 in (985 mm)
Boom swing	75° left/50° right
Tail swing overhang:	
Standard counterweight	0 in (0 mm)
Additional counterweight	5 in (115 mm)



BLADE SPECS

	Standard Blade	Angled Blade
L. Backfill blade height	1 ft 3 in (370 mm)	1 ft 4 in (407 mm)
M. Backfill blade rise above ground	1 ft 3 in (375 mm)	1 ft 5 in (428 mm)
N. Backfill blade dig depth	1 ft 3 in (390 mm)	1 ft 5 in (440 mm)
Backfill blade width	5 ft 9 in (1 740 mm)	5 ft 9 in (1 740 mm)

PERFORMANCE SPECS

	4 ft 3 in (1.3 m) Arm	5 ft 3 in (1.6 m) Arm
O. Maximum dig radius	17 ft 5 in (5 315 mm)	18 ft 5 in (5 605 mm)
P. Dig radius at groundline	17 ft 1 in (5 200 mm)	18 ft 0 in (5 495 mm)
Q. Maximum dig depth	10 ft 3 in (3 135 mm)	11 ft 3 in (3 440 mm)
R. Vertical straight wall dig depth	7 ft 2 in (2 190 mm)	8 ft 5 in (2 565 mm)
S. Dump height	11 ft 3 in (3 425 mm)	11 ft 10 in (3 615 mm)
T. Overall reach height	15 ft 9 in (4 810 mm)	16 ft 7 in (5 010 mm)
U. Bucket rotation	180°	180°
Arm digging force - ISO	4,390 lbf (1 990 kgf/19.5 kN)	3,800 lbf (1 720 kgf/16.9 kN)
Bucket digging force - ISO	6,900 lbf (3 130 kgf/30.7 kN)	6,900 lbf (3 130 kgf/30.7 kN)

LIFT CAPACITIES

8 ft 2 in (2.5 m) Boom, 4 ft 3 in (1.3 m) Arm, Dozer Blade Down Canopy unit equipped with 0.11 m³ (SAE heaped) bucket, 12 in (300 mm) rubber track and 900 lb (410 kg) counterweight.

Load/Lift Point Height	LOAD RADIUS								MAXIMUM REACH		
	3 ft (1.0 m)		7 ft (2.0 m)		10 ft (3.0 m)		13 ft (4.0 m)		REACH	CAPACITY	
	END	SIDE	END	SIDE	END	SIDE	END	SIDE		END	SIDE
+10 ft (3.0 m)									12 ft 11 in (3.94 m)	1,170 lb* (530 kg)*	1,070 lb (490 kg)
+7 ft (2.0 m)					1,380 lb* (630 kg)*	1,380 lb* (630 kg)*	1,210 lb* (550 kg)*	1,020 lb (460 kg)	14 ft 7 in (4.45 m)	1,190 lb* (540 kg)*	830 lb (380 kg)
+3 ft (1.0 m)					1,990 lb* (900 kg)*	1,540 lb (700 kg)	1,400 lb* (640 kg)*	970 lb (440 kg)	15 ft 3 in (4.64 m)	1,240 lb* (560 kg)*	750 lb (340 kg)
Groundline			2,990 lb* (1 320 kg)*	2,500 lb (1 130 kg)	2,410 lb* (1 090 kg)*	1,440 lb (650 kg)	1,570 lb* (710 kg)*	920 lb (420 kg)	14 ft 11 in (4.55 m)	1,320 lb* (600 kg)*	750 lb (340 kg)
-3 ft (-1.0 m)	3,840 lb* (1 740 kg)*	3,840 lb* (1 740 kg)*	4,330 lb* (1 960 kg)*	2,800 lb (1 270 kg)	2,390 lb* (1 090 kg)*	1,410 lb (640 kg)	1,520 lb* (690 kg)*	910 lb (410 kg)	13 ft 8 in (4.17 m)	1,400 lb* (640 kg)*	860 lb (390 kg)
-7 ft (-2.0 m)	5,680 lb* (2 580 kg)*	5,680 lb* (2 580 kg)*	3,190 lb* (1 450 kg)*	2,980 lb (1 310 kg)	1,840 lb* (830 kg)*	1,460 lb (660 kg)			11 ft 0 in (3.36 m)	1,470 lb* (670 kg)*	1,230 lb (560 kg)

NOTE: Lifting capacity are based on ISO 10567.

Lifting capacity does not exceed 75% of tipping load with the machine on firm, level ground or 87% of full hydraulic capacity.

The lift point is a hook located on the back of the bucket.

*Indicates load limited by hydraulic capacity.

8 ft 2 in (2.5 m) Boom, 5 ft 3 in (1.6 m) Arm, Dozer Blade Down Canopy unit equipped with 0.11 m³ (SAE heaped) bucket, 12 in (300 mm) rubber track and 1,235 lb (560 kg) counterweight.

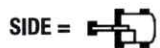
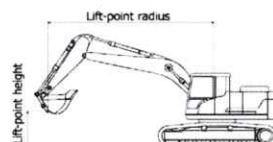
Load/Lift Point Height	LOAD RADIUS								MAXIMUM REACH		
	3 ft (1.0 m)		7 ft (2.0 m)		10 ft (3.0 m)		13 ft (4.0 m)		REACH	CAPACITY	
	END	SIDE	END	SIDE	END	SIDE	END	SIDE		END	SIDE
+10 ft (3.0 m)							970 lb* (440 kg)*	970 lb* (440 kg)*	14 ft 2 in (4.32 m)	970 lb* (440 kg)*	970 lb* (440 kg)*
+7 ft (2.0 m)							1,060 lb* (480 kg)*	1,060 lb* (480 kg)*	15 ft 8 in (4.78 m)	940 lb* (420 kg)*	840 lb (380 kg)
+3 ft (1.0 m)			3,710 lb* (1 680 kg)*	3,390 lb (1 540 kg)	1,770 lb* (800 kg)*	1,760 lb (800 kg)	1,290 lb* (590 kg)*	1,110 lb (500 kg)	16 ft 3 in (4.95 m)	990 lb* (450 kg)*	760 lb (350 kg)
Groundline			3,060 lb* (1 390 kg)*	3,060 lb* (1 390 kg)*	2,300 lb* (1 040 kg)*	1,630 lb (740 kg)	1,510 lb* (680 kg)*	1,050 lb (470 kg)	16 ft 0 in (4.87 m)	1,140 lb* (520 kg)*	760 lb (350 kg)
-3 ft (-1.0 m)	3,040 lb* (1 380 kg)*	3,040 lb* (1 380 kg)*	4,610 lb* (2 090 kg)*	3,090 lb (1 400 kg)	2,420 lb* (1 100 kg)*	1,580 lb (720 kg)	1,560 lb* (710 kg)*	1,020 lb (460 kg)	14 ft 10 in (4.52 m)	1,250 lb* (570 kg)*	850 lb (380 kg)
-7 ft (-2.0 m)	4,610 lb* (2 090 kg)*	4,610 lb* (2 090 kg)*	3,720 lb* (1 690 kg)*	3,160 lb (1 430 kg)	2,080 lb* (940 kg)*	1,600 lb (730 kg)			12 ft 6 in (3.81 m)	1,340 lb* (610 kg)*	1,120 lb (510 kg)

NOTE: Lifting capacity are based on ISO 10567.

Lifting capacity does not exceed 75% of tipping load with the machine on firm, level ground or 87% of full hydraulic capacity.

The lift point is a hook located on the back of the bucket.

*Indicates load limited by hydraulic capacity.



STANDARD EQUIPMENT

ENGINE

Yanmar 3TNV88F-ESHYB
Glow plug starting aid
Dry type air cleaner with restriction indicator

ELECTRICAL

12-volt electrical starting system
Heavy-duty battery
Battery Master Switch
Key Start
Anti-Theft-Engine starting passwords
Front working light
Auto-idle feature with on/off switch
Horn
Pre-wired – Telematics ready

HYDRAULICS

Auxiliary hydraulics – single/bi-directional –
and plumbing to arm
Large hydraulic oil cooler
Control pattern selector valve
Cylinder rod protection covers – Backfill
blade and Boom

TRACK DRIVE

Rubber belt tracks
Automatic 2-speed travel
Fully hydrostatic drive system
Sealed and lubricated track rollers
Track tension adjustment – grease type

UPPER STRUCTURE

Zero tail swing
Standard arm: 4 ft 3 in (1.3 m)
Bucket linkage with lifting hook
Thumb bracket

OPERATOR ENVIRONMENT

See page 1

OTHER

Swing boom – 75° left/50° right
Hydraulic backfill blade

WARRANTY

Base warranty coverage: 2-Year/3,000-Hour
Full Machine Limited Warranty

OPTIONAL EQUIPMENT

OPERATOR ENVIRONMENT

Cab with Heat and air conditioning and radio
with USB and 2 speakers
Travel alarm

TRACK OPTIONS

Tracks:
Steel Tracks 12 in (300 mm)

OTHER

Additional counterweight adds 330 lb (150 kg)
Optional long arm: 5 ft 3 in (1.6 m)
Hydraulic quick coupler provision
Hydraulic coupler
Klacc coupler
Mechanical coupler
Hydraulic hammer
Beacon
2nd auxiliary circuit
4-way angle blade with 25° left and 25°
right angle offset: adds 220 lb (100 kg)

CaseCE.com

©2021 CNH Industrial America LLC. All rights reserved. CASE is a trademark registered in the United States and many other countries, owned by or licensed to CNH Industrial N.V., its subsidiaries or affiliates. CNH Industrial Capital is a trademark in the United States and many other countries, owned by or licensed to CNH Industrial N.V., its subsidiaries or affiliates. Printed in U.S.A. Contains 10% post-consumer fiber.

IMPORTANT: CASE Construction Equipment Inc. reserves the right to change these specifications without notice and without incurring any obligation relating to such change. Availability of some models and equipment builds vary according to the country in which the equipment is used. The illustrations and text may include optional equipment and accessories and may not include all standard equipment. Your CASE dealer/distributor will be able to give you details of the products and their specifications available in your area.



CASE Construction Equipment is biodiesel-friendly. NOTE: All engines meet current EPA emissions regulations. All specifications are stated in accordance with SAE Standards or Recommended Practices, where applicable.



Always read the Operator's Manual before operating any equipment. Inspect equipment before using it, and be sure it is operating properly. Follow the product safety signs and use any safety features provided.

Form No. CCE202108CX37C
Replaces Form No. CCE201806CX37C

CX37C

Prepared For

CITY OF WEST PLAINS
PO BOX 710
WEST PLAINS, MO 657750710
(417) 256-7176

Prepared By

Brook Bowman
Heritage Tractor, Inc.
3285 North US Hwy 63
West Plains, MO 65775
4173723602
BBowman@heritagetractor.com

Quote Id 1372555

Creation Date 05-Dec-2025

Expiration Date 10-Jan-2026

We're Grateful for the Opportunity

Thank you for considering Heritage Tractor for your equipment needs. We appreciate the opportunity to earn your business. Your trust allows us to keep doing what we do best—supporting you with quality equipment and dependable service.

The Heart of Heritage

This quote is built on more than equipment pricing — it's built on the Heart of Heritage. At Heritage Tractor, our purpose is built around three priorities:

Customers

Delivering innovative tools and solutions and stellar support.

Communities

Investing in the places where we live and work.

Coworkers

Supporting our team so they can support you.

These aren't just words on a page—they're the heart of who we are and the promise behind every piece of equipment we quote. We're here for your operation. Here for the community. Here for you.

Here for your success. Here for the community. Here for you.

Prepared For

CITY OF WEST PLAINS
PO BOX 710
WEST PLAINS, MO 657750710
(417) 256-7176

Prepared By

Brook Bowman
Heritage Tractor, Inc.
3285 North US Hwy 63
West Plains, MO 65775
4173723602
BBowman@heritagetractor.com

Quote Id 1372555

Creation Date 05-Dec-2025

Expiration Date 10-Jan-2026

Quote Summary

Equipment Summary	Suggested List	Selling Price	QTY In Group	Extended
New 2025 JOHN DEERE 35 P MY25 TIER EXCAVATOR GEN A 0150FF-1FF035PAKRK005118	\$84,577.54	\$58,175.00	1	\$58,175.00

Equipment Total				\$58,175.00
------------------------	--	--	--	--------------------

Quote Summary

Total Selling Price	\$58,175.00
Sub-total	\$58,175.00
Balance Due	\$58,175.00

Salesperson : X _____

Accepted By : X _____

Selling Equipment

Quote # 1372555
Customer CITY OF WEST PLAINS

New 2025 JOHN DEERE 35 P MY25 TIER EXCAVATOR GEN A 0150FF			QTY In Group : 1
Hours	1		Suggested List
Serial Number	1FF035PAKRK005118		\$84,577.54
Stock Number	362509		Selling Price
PUK Parent Serial #	---		\$58,175.00

Equipment Summary

Code	Description	Qty	List Price	Adjusted Selling Price
0150FF	35 P MY25 TIER EXCAVATOR GEN A	1	\$68,240.00	\$68,240.00

Base / Options

Code	Description	Qty	List Price	Adjusted Selling Price
0202	DESTINATION CODE - US	1	\$0.00	\$0.00
0259	ENGLISH CUSTOMER DELIVERY OM	1	\$0.00	\$0.00
0408	CFG8 CAB RBRTRK LNGARM AB	1	\$11,687.00	\$11,687.00
Total Base / Options			\$79,927.00	\$79,927.00

Dealer Attachments

Code	Description	Qty	List Price	Adjusted Selling Price
BYT11548	Hydraulic Gray Thumb	1	\$2,575.00	\$2,575.00
BYT10966	18 in. (457 mm) Heavy Duty Bucket; 2.8 c. ft. (0.080 c. m.) (4 Teeth Included)	1	\$1,100.00	\$1,100.00
Total Dealer Attachments			\$3,675.00	\$3,675.00

Other Charges

Description	List Price
FREIGHT	\$823.68
MKT DEV FUND	\$151.86
Total Adjustments	\$975.54

Customer Discounts

Description	Discount Amount
Total Discounts	(\$26,402.54)



Total Selling Price	\$84,577.54	\$58,175.00
---------------------	-------------	-------------

Original Factory Build Codes

Code	Description
0150FF	35 P TIER EXCAVATOR GEN A
0150FF0408	CFG8 CAB RBTRK LNGARM AB
0150FF0202	DESTINATION CODE - US
0150FF0259	ENGLISH CUSTOMER DELIVERY OM

Prepared For

CITY OF WEST PLAINS
PO BOX 710
WEST PLAINS, MO 657750710
(417) 256-7176

Prepared By

Brook Bowman
Heritage Tractor, Inc.
3285 North US Hwy 63
West Plains, MO 65775
4173723602
BBowman@heritagetractor.com

Quote Id 1372555

Creation Date 05-Dec-2025

Expiration Date 10-Jan-2026

We're Grateful for the Opportunity

Thank you for considering Heritage Tractor for your equipment needs. We appreciate the opportunity to earn your business. Your trust allows us to keep doing what we do best—supporting you with quality equipment and dependable service.

The Heart of Heritage

This quote is built on more than equipment pricing — it's built on the Heart of Heritage. At Heritage Tractor, our purpose is built around three priorities:

Customers

Delivering innovative tools and solutions and stellar support.

Communities

Investing in the places where we live and work.

Coworkers

Supporting our team so they can support you.

These aren't just words on a page—they're the heart of who we are and the promise behind every piece of equipment we quote. We're here for your operation. Here for the community. Here for you.

Here for your success. Here for the community. Here for you.

Prepared For

CITY OF WEST PLAINS
PO BOX 710
WEST PLAINS, MO 657750710
(417) 256-7176

Prepared By

Brook Bowman
Heritage Tractor, Inc.
3285 North US Hwy 63
West Plains, MO 65775
4173723602
BBowman@heritagetractor.com

Quote Id 1372555

Creation Date 05-Dec-2025

Expiration Date 10-Jan-2026

Quote Summary

Equipment Summary	Suggested List	Selling Price	QTY In Group	Extended
30 P-Tier Compact Excavator	\$70,841.00	\$50,770.00	1	\$50,770.00
Equipment Total				\$50,770.00
<hr/>				
Quote Summary				
Total Selling Price				\$50,770.00
Sub-total				\$50,770.00
Balance Due				\$50,770.00

Salesperson : X _____

Accepted By : X _____

Selling Equipment

Quote # 1372555
Customer CITY OF WEST PLAINS

30 P-Tier Compact Excavator

QTY In Group : 1

Hours --- Suggested List
Serial Number --- \$70,841.00
Stock Number --- Selling Price
PUK Parent Serial # \$50,770.00

Equipment Summary

Code	Description	Qty	List Price	Adjusted Selling Price
0140FF	30 P-Tier Compact Excavator	1	\$61,812.00	\$61,812.00

Base / Options

Code	Description	Qty	List Price	Adjusted Selling Price
0202	Destination Code - United States	1	\$0.00	\$0.00
0259	English Customer Delivery Packet	1	\$0.00	\$0.00
0402	Configuration 2 - Cab, Rubber, Susp, Std Arm	1	\$4,546.00	\$4,546.00
Total Base / Options			\$66,358.00	\$66,358.00

Dealer Attachments

Code	Description	Qty	List Price	Adjusted Selling Price
BYT11548	Hydraulic Gray Thumb	1	\$2,580.00	\$2,580.00
BYT11908	18 in. (457 mm) Heavy Duty, 2.8 c. ft. (0.08 c. m.); 35 Size Pin Grabber Coupler Bucket	1	\$1,190.00	\$1,190.00
Total Dealer Attachments			\$3,770.00	\$3,770.00

Other Charges

Description	List Price
FREIGHT	\$713.00
Total Adjustments	\$713.00

Customer Discounts

Description	Discount Amount
Total Discounts	(\$20,071.00)
Total Selling Price	\$70,841.00
	\$50,770.00

Pricing Plans (USD)

Comprehensive

Hours	24 Months	36 Months	48 Months	60 Months
2000		<input type="radio"/> 820	<input type="radio"/> 960	<input type="radio"/> 1,160
2500	<input type="radio"/> 630	<input type="radio"/> 1,115	<input type="radio"/> 1,325	<input type="radio"/> 1,590
3000	<input type="radio"/> 875	<input type="radio"/> 1,405	<input type="radio"/> 1,690	<input type="radio"/> 2,010
4000	<input type="radio"/> 1,410	<input type="radio"/> 2,095	<input type="radio"/> 2,715	<input type="radio"/> 3,065
5000	<input type="radio"/> 2,015	<input type="radio"/> 2,300	<input type="radio"/> 3,540	<input type="radio"/> 3,985
6000	<input type="radio"/> 2,845	<input type="radio"/> 3,170	<input type="radio"/> 4,765	<input type="radio"/> 5,980

Confidential with No Personal Information



Product Quotation
Quotation Number: **AU1545008**
Quote Sent Date: **Dec 04, 2025**
Expiration Date: **Jan 03, 2026**

Your Bobcat Contact
Alex Urlaub
Phone: +17012416372
Email: alex.urlaub@doosan.com

Your Customer Contact

Deliver to
City of West Plains
1910 N HOLIDAY LN
WEST PLAINS, MO, 65775-8000

Bobcat Dealer
Bobcat of West Plains, West Plains, MO
10399 COUNTY ROAD 8270
WEST PLAINS, MO, 65775

Bill to
City of West Plains
1910 N HOLIDAY LN
WEST PLAINS, MO, 65775-8000

Item Name	Item Number	Quantity	Price Each	Total
E35 25HP R2-Series Bobcat Compact Excavator	M3409	1	36,906.28	36,906.28
Standard Equipment:				
24.8 HP			Hydraulic Joystick Controls	
Tier 4 Diesel Engine			Keyed Ignition	
Auto-Idle			LED Work Lights	
Auto-Shift, Two-Speed Travel			Lift Eye	
Auxiliary Hydraulics with Selectable Flow			Rubber Tracks	
w/ Arm Mounted Flush Face Quick Couplers			Spark Arrestor Exhaust System	
Canopy			Standard Arm	
Includes: Cup Holder, Retractable Seat Belt, Vinyl Suspension Seat			Standard Instrument Panel	
Roll Over Protective Structure (ROPS)- Meets Requirements of ISO 12117-2: 2008			Vandalism Protection	
Tip Over Protective Structure (TOPS) - Meets Requirements of ISO 12117: 2000			X-Change Attachment Mounting System	
Falling Object Protective Structure (FOPS) - Meets Requirements of ISO 10262:1998			Telematics with 2-year Machine IQ Basics Subscription	
Control Console Locks			+90-Day Machine IQ Health & Security Trial	
Control Pattern Selector Valve (ISO/STD)			Warranty: 2 years, or 2000 hours whichever occurs first	
Dozer Blade with Float			Zero Tail Swing	
Engine/Hydraulic Monitor with Shutdown				
Fingertip Auxiliary Hydraulic Control				
Fingertip Boom Swing Control				
Horn				
Cab Package	M3409-P11-C05	1	4,991.50	4,991.50
<i>Included:</i> Cab Package: Enclosed Cab with HVAC, Standard Instrument Panel, Keyed Ignition, Cloth Suspension Seat, Travel Motion Alarm,				
Hydraulic Clamp - X-Change - Long Arm - Class III w/ Diverter Valve	M3409-R08-C15	1	3,116.84	3,116.84
Long Arm	M3409-R03-C02	1	1,196.62	1,196.62
18" Class 3 SD MX Bucket	7457568	1	1,307.20	1,307.20
Total for E35 25HP R2-Series Bobcat Compact Excavator				47,518.44

Quote Subtotal	47,518.44
Dealer PDI	200.00
Tariff Surcharge	2,578.76
Freight Charges	1,275.00
Destination Charges	100.00
Quote Total - USD	51,672.20

Comment: *Plus applicable taxes. IF Tax Exempt, please include Tax Exempt Certificate with the order.

*Prices per the Sourcewell Contract #020223-CEC

*Sourcewell Member Number (if applicable): _____

*All orders should include 1) Accounts Payable Contact and email address, 2) W9 with correct legal entity name, and 3) Bill to Address.

*Orders may be placed with the contract holder or authorized dealer as allowed by the terms and conditions of the contract. *A Copy of all orders must be provided to Heather.Messmer@Doosan.com.

*Contact Holder Information: Doosan Bobcat North America, Inc. Govt Sales, 250 E Beaton Drive, West Fargo, ND 58078. TID# 38-0425350.

*Payment Terms: Net 60 Days. Credit cards accepted.

*Remittance address: Doosan Bobcat North America, Inc. P. O. Box 74007382, Chicago, IL 60674-7382

Customer Acceptance:	
Quotation Number: AU1545008	Purchase Order: _____
Authorized Signature:	
Print: _____	Sign: _____
Date: _____	Email: _____
Addresses	
Delivery Address _____	
Billing Address (if different from ship to): _____	
Tax Exempt: Y <input type="checkbox"/> / N <input type="checkbox"/>	
Exempt in the State of: _____	
Tax Exempt ID: _____	
Federal: _____	
State: _____	

Expiration Date: _____



Bobcat E35 R2- Series 25HP

Bobcat E38 R2

Configuration	E35 R2- Series	E35 R2- Series (EA)	E35 R2- Series (LA)	E38 Long Arm	E38 Extendable Arm	E38 R2 Series
---------------	-------------------	---------------------------	---------------------------	--------------------	--------------------	------------------

Engine

Engine Model	D1703- M- D1- E4B- BC-2	D1703- M- D1- E4B- BC-2	D1703- M- D1- E4B- BC-2	1.8L Bobcat Engine	1.8L Bobcat Engine	1.8L Bobcat Engine
Engine Make	Kubota			Bobcat		
Emissions Tier (EPA)	Tier 4			Tier 4		
Maximum Governed RPM	2450 rpm	2450 rpm	2450 rpm	2400 rpm	2400 rpm	2400 rpm
Engine Fuel	Diesel			Diesel		
Horsepower	24.8 hp	24.8 hp	24.8 hp	33.2 hp	33.2 hp	33.2 hp
Gross HP	24.8 hp	24.8 hp	24.8 hp	33.2 hp	33.2 hp	33.2 hp
Net HP	24.4 hp	24.8 hp	24.8 hp	33 hp	33 hp	33 hp
Number of Cylinders	3	3	3	3	3	3

Performance

Operating Weight	7659 lbs	8590 lbs	8362 lbs	8596 lbs	8824 lbs	7893 lbs
Weight Class	4 t	4 t	4 t	4 t	4 t	4 t
Travel Speed - High	2.9 mph	2.9 mph	2.9 mph	2.9 mph	2.9 mph	2.9 mph
Travel Speed - Low	1.6 mph	1.6 mph	1.6 mph	1.6 mph	1.6 mph	1.6 mph
Arm Digging Force	4690 lbf	4592 lbf	4074 lbf	4074 lbf	4592 lbf	4690 lbf
Bucket Digging Force	7284 lbf	7284 lbf	7284 lbf	7284 lbf	7284 lbf	7284 lbf
Rated Lift Capacity	3318 lbs	3058 lbs	3206 lbs	3206 lbs	3058 lbs	3318 lbs
Lift Radius	118 in	118 in	118 in	118 in	118 in	118 in
Slew Speed	8.6 rpm	8.6 rpm	8.6 rpm	8.6 rpm	8.6 rpm	8.6 rpm
Boom Swing - Left	75 deg	75 deg	75 deg	75 +/- deg	75 +/- deg	75 deg
Boom Swing - Right	55 deg	55 deg	55 deg	55 +/- deg	55 +/- deg	55 deg
Maximum Dig Depth	121.2 in	153.2 in	133 in	133 in	153 in	121 in
Max Dump Height	137.2 in	154.5 in	144.3 in	144 in	155 in	137 in
Maximum Reach at Ground Level	204.3 in	235.1 in	215.8 in	216 in	235 in	204 in
Maximum Depth of Vertical Wall	75.2 in	98.1 in	85.7 in	85.7 in	71.2 in	75.2 in
Ground Pressure (Rubber)	4.6 psi	5.2 psi	5 psi	5.2 psi	5.3 psi	4.7 psi

Capacities

Fuel Tank	13.7 gal	13.7 gal	13.7 gal	13.7 gal	13.7 gal	13.7 gal
Hydraulic Reservoir	2.2 gal	2.2 gal	2.2 gal	2.2 gal	2.2 gal	2.2 gal

Hydraulic System

Number of Hydraulic Pumps	1	1	1	1	1	1
Pump Type				Single Outlet Variable Displacement Piston Pump with Gear Pumps	Single Outlet Variable Displacement Piston Pump with Gear Pumps	Single Outlet Variable Displacement Piston Pump with Gear Pumps
Pump Capacity	24.4 gpm	24.4 gpm	24.4 gpm	26.6 gpm	26.6 gpm	26.6 gpm
Auxiliary Std Flow	16.9 gpm	16.9 gpm	16.9 gpm	16.9 gpm	16.9 gpm	16.9 gpm
Auxiliary Pressure	2987 psi	2987 psi	2987 psi	2987 psi	2987 psi	2987 psi

Dimensions

Length	190 in	190.4 in	190.1 in	190.1 in	190.4 in	190 in
Overall Length in Travel Position	190 in	190.4 in	190.1 in	190.4 in	190.4 in	190 in
Width	69.7 in	69.7 in	69.7 in	69.7 in	69.7 in	69.7 in
Blade Width	68.9 in	68.9 in	68.9 in	68.9 in	68.9 in	68.9 in
Height	96.2 in	96.2 in	96.2 in	96.2 in	96.2 in	96.2 in
Height with Operator Cab	96.2 in	96.2 in	96.2 in	96.2 in	96.2 in	96.2 in

Length of track on ground	64.8 in	64.8 in	64.8 in	64.8 in	64.8 in	64.8 in	
Tail Overhang, Side	0 in	3.2 in	3.2 in	3.2 in	3.2 in	0 in	

Features

Air Conditioning	×	×	×	×	×	×	
Swing Boom	■	■	■	■	■	■	
Cab Enclosure	×	×	×	×	×	×	
Cab Heater	□	□	□		n/ a		
Heater Air Conditioning	×	×	×		n/ a		
Radio	×	×	×	×	×	×	
Turbocharged Engine	DEFundefined			DEFundefined			
Suspension Seat	■	■	■	■	■	■	
Tail Swing Type	Zero	Minimal	n/ a		Zero		
Engine Shutdown	■	■	■	■	■	■	
Auxiliary Hydraulics	■	■	■	■	■	■	
Secondary Auxiliary Hydraulics	×	×	×		n/ a		
Quick Tach System	■	×	■	■	■	■	
Rubber Track	■	■	■	■	■	■	
Selectable Auxiliary Hydraulic Flow	■	■	■	■	■	■	
Angle Blade	×	×	×	×	×	×	

Certain specification(s) are based on engineering calculations and are not actual measurements. Specification(s) are provided for comparison purposes only and are subject to change without notice. Specification(s) for your individual equipment will vary based on normal variations in design, manufacturing, operating conditions, and other factors.



Quote Date : 12/4/2025

* Pricing is valid through the end of the month

Dealer Information

Name : Bobcat of West Plains

Address :

City :

State :

Zip Code :

Salesperson : Mark Roberts

Email : mark.bcofwp@gmail.com

Equipment Information

Model Number : E35R2 25HP

Serial Number :

Delivery Date : 04-Dec-25

24/3000 Full

Extended Warranty Plan Price : \$1200

Cost Per Hour : \$0.40

Cost Per Month : \$50.00

24/4000 Full

Extended Warranty Plan Price : \$1800

Cost Per Hour : \$0.45

Cost Per Month : \$75.00

24/5000 Full

Extended Warranty Plan Price : \$2700

Cost Per Hour : \$0.54

Cost Per Month : \$112.50

36/2000 Full

Extended Warranty Plan Price : \$800

Cost Per Hour : \$0.40

Cost Per Month : \$22.22

36/3000 Full

Extended Warranty Plan Price : \$1500

Cost Per Hour : \$0.50

Cost Per Month : \$41.67

36/4000 Full

Extended Warranty Plan Price : \$2100

Cost Per Hour : \$0.53

Cost Per Month : \$58.33

36/5000 Full

Extended Warranty Plan Price : \$3000

Cost Per Hour : \$0.60

Cost Per Month : \$83.33

48/2000 Full

Extended Warranty Plan Price : \$1100

Cost Per Hour : \$0.55

Cost Per Month : \$22.92

48/3000 Full

Extended Warranty Plan Price : \$2200

Cost Per Hour : \$0.73

Cost Per Month : \$45.83

48/4000 Full

Extended Warranty Plan Price : \$2800

Cost Per Hour : \$0.70

Cost Per Month : \$58.33



Bobcat is a Doosan company. Doosan is a global leader in construction equipment, power and water solutions, engines, and engineering, proudly serving customers and communities for more than a century. Bobcat®, the Bobcat logo and the colors of the Bobcat machine are registered trademarks of Bobcat Company in the United States and various other countries. ©2017 Bobcat Company. All rights reserved. | 49744-BAP0012



Quote Date : 12/4/2025

* Pricing is valid through the end of the month

48/5000 Full

Extended Warranty Plan Price : \$4000

Cost Per Hour : \$0.80

Cost Per Month : \$83.33

60/2000 Full

Extended Warranty Plan Price : \$1400

Cost Per Hour : \$0.70

Cost Per Month : \$23.33

60/3000 Full

Extended Warranty Plan Price : \$2800

Cost Per Hour : \$0.93

Cost Per Month : \$46.67

60/4000 Full

Extended Warranty Plan Price : \$3700

Cost Per Hour : \$0.93

Cost Per Month : \$61.67

60/5000 Full

Extended Warranty Plan Price : \$5300

Cost Per Hour : \$1.06

Cost Per Month : \$88.33

24/3000 Powertrain + Hydraulics

Extended Warranty Plan Price : \$1000

Cost Per Hour : \$0.33

Cost Per Month : \$41.67

24/4000 Powertrain + Hydraulics

Extended Warranty Plan Price : \$1500

Cost Per Hour : \$0.38

Cost Per Month : \$62.50

24/5000 Powertrain + Hydraulics

Extended Warranty Plan Price : \$2300

Cost Per Hour : \$0.46

Cost Per Month : \$95.83

36/2000 Powertrain + Hydraulics

Extended Warranty Plan Price : \$700

Cost Per Hour : \$0.35

Cost Per Month : \$19.44

36/3000 Powertrain + Hydraulics

Extended Warranty Plan Price : \$1200

Cost Per Hour : \$0.40

Cost Per Month : \$33.33

36/4000 Powertrain + Hydraulics

Extended Warranty Plan Price : \$1700

Cost Per Hour : \$0.43

Cost Per Month : \$47.22

36/5000 Powertrain + Hydraulics

Extended Warranty Plan Price : \$2500

Cost Per Hour : \$0.50

Cost Per Month : \$69.44

48/2000 Powertrain + Hydraulics

Extended Warranty Plan Price : \$900

Cost Per Hour : \$0.45

Cost Per Month : \$18.75

48/3000 Powertrain + Hydraulics

Extended Warranty Plan Price : \$1800

Cost Per Hour : \$0.60

Cost Per Month : \$37.50



Bobcat is a Doosan company. Doosan is a global leader in construction equipment, power and water solutions, engines, and engineering, proudly serving customers and communities for more than a century. Bobcat®, the Bobcat logo and the colors of the Bobcat machine are registered trademarks of Bobcat Company in the United States and various other countries. ©2017 Bobcat Company. All rights reserved. | 49744-BAP0012



Quote Date : 12/4/2025

* Pricing is valid through the end of the month

48/4000 Powertrain + Hydraulics

Extended Warranty Plan Price : \$2300

Cost Per Hour : \$0.58
Cost Per Month : \$47.92

48/5000 Powertrain + Hydraulics

Extended Warranty Plan Price : \$3300

Cost Per Hour : \$0.66
Cost Per Month : \$68.75

60/2000 Powertrain + Hydraulics

Extended Warranty Plan Price : \$1100

Cost Per Hour : \$0.55
Cost Per Month : \$18.33

60/3000 Powertrain + Hydraulics

Extended Warranty Plan Price : \$2300

Cost Per Hour : \$0.77
Cost Per Month : \$38.33

60/4000 Powertrain + Hydraulics

Extended Warranty Plan Price : \$3000

Cost Per Hour : \$0.75
Cost Per Month : \$50.00

60/5000 Powertrain + Hydraulics

Extended Warranty Plan Price : \$4300

Cost Per Hour : \$0.86
Cost Per Month : \$71.67

24/3000 Powertrain

Extended Warranty Plan Price : \$700

Cost Per Hour : \$0.23
Cost Per Month : \$29.17

24/4000 Powertrain

Extended Warranty Plan Price : \$1000

Cost Per Hour : \$0.25
Cost Per Month : \$41.67

24/5000 Powertrain

Extended Warranty Plan Price : \$1500

Cost Per Hour : \$0.30
Cost Per Month : \$62.50

36/2000 Powertrain

Extended Warranty Plan Price : \$500

Cost Per Hour : \$0.25
Cost Per Month : \$13.89

36/3000 Powertrain

Extended Warranty Plan Price : \$800

Cost Per Hour : \$0.27
Cost Per Month : \$22.22

36/4000 Powertrain

Extended Warranty Plan Price : \$1200

Cost Per Hour : \$0.30
Cost Per Month : \$33.33

36/5000 Powertrain

Extended Warranty Plan Price : \$1600

Cost Per Hour : \$0.32
Cost Per Month : \$44.44

48/2000 Powertrain

Extended Warranty Plan Price : \$600

Cost Per Hour : \$0.30
Cost Per Month : \$12.50



Bobcat is a Doosan company. Doosan is a global leader in construction equipment, power and water solutions, engines, and engineering, proudly serving customers and communities for more than a century. Bobcat®, the Bobcat logo and the colors of the Bobcat machine are registered trademarks of Bobcat Company in the United States and various other countries.
©2017 Bobcat Company. All rights reserved. | 49744-BAP0012



Quote Date : 12/4/2025

* Pricing is valid through the end of the month

48/3000 Powertrain

Extended Warranty Plan Price : \$1200

Cost Per Hour : \$0.40
Cost Per Month : \$25.00

48/4000 Powertrain

Extended Warranty Plan Price : \$1500

Cost Per Hour : \$0.38
Cost Per Month : \$31.25

48/5000 Powertrain

Extended Warranty Plan Price : \$2200

Cost Per Hour : \$0.44
Cost Per Month : \$45.83

60/2000 Powertrain

Extended Warranty Plan Price : \$700

Cost Per Hour : \$0.35
Cost Per Month : \$11.67

60/3000 Powertrain

Extended Warranty Plan Price : \$1500

Cost Per Hour : \$0.50
Cost Per Month : \$25.00

60/4000 Powertrain

Extended Warranty Plan Price : \$2000

Cost Per Hour : \$0.50
Cost Per Month : \$33.33

60/5000 Powertrain

Extended Warranty Plan Price : \$2900

Cost Per Hour : \$0.58
Cost Per Month : \$48.33

24/3000 Full + Planned Maintenance

Extended Warranty Plan Price : \$12100

Cost Per Hour : \$4.03
Cost Per Month : \$504.17

24/4000 Full + Planned Maintenance

Extended Warranty Plan Price : \$15800

Cost Per Hour : \$3.95
Cost Per Month : \$658.33

24/5000 Full + Planned Maintenance

Extended Warranty Plan Price : \$19800

Cost Per Hour : \$3.96
Cost Per Month : \$825.00

36/1500 Full + Planned Maintenance

Extended Warranty Plan Price : \$6000

Cost Per Hour : \$4.00
Cost Per Month : \$166.67

36/2000 Full + Planned Maintenance

Extended Warranty Plan Price : \$8100

Cost Per Hour : \$4.05
Cost Per Month : \$225.00

36/3000 Full + Planned Maintenance

Extended Warranty Plan Price : \$12200

Cost Per Hour : \$4.07
Cost Per Month : \$338.89

36/4000 Full + Planned Maintenance

Extended Warranty Plan Price : \$16000

Cost Per Hour : \$4.00
Cost Per Month : \$444.44



Bobcat is a Doosan company. Doosan is a global leader in construction equipment, power and water solutions, engines, and engineering, proudly serving customers and communities for more than a century. Bobcat®, the Bobcat logo and the colors of the Bobcat machine are registered trademarks of Bobcat Company in the United States and various other countries. ©2017 Bobcat Company. All rights reserved. | 49744-BAP0012



Quote Date : 12/4/2025

* Pricing is valid through the end of the month

36/5000 Full + Planned Maintenance

Extended Warranty Plan Price : \$20100

Cost Per Hour : \$4.02
Cost Per Month : \$558.33

48/1500 Full + Planned Maintenance

Extended Warranty Plan Price : \$6400

Cost Per Hour : \$4.27
Cost Per Month : \$133.33

48/2000 Full + Planned Maintenance

Extended Warranty Plan Price : \$8500

Cost Per Hour : \$4.25
Cost Per Month : \$177.08

48/3000 Full + Planned Maintenance

Extended Warranty Plan Price : \$12700

Cost Per Hour : \$4.23
Cost Per Month : \$264.58

48/4000 Full + Planned Maintenance

Extended Warranty Plan Price : \$16600

Cost Per Hour : \$4.15
Cost Per Month : \$345.83

48/5000 Full + Planned Maintenance

Extended Warranty Plan Price : \$21000

Cost Per Hour : \$4.20
Cost Per Month : \$437.50

60/1500 Full + Planned Maintenance

Extended Warranty Plan Price : \$6700

Cost Per Hour : \$4.47
Cost Per Month : \$111.67

60/2000 Full + Planned Maintenance

Extended Warranty Plan Price : \$8900

Cost Per Hour : \$4.45
Cost Per Month : \$148.33

60/3000 Full + Planned Maintenance

Extended Warranty Plan Price : \$13000

Cost Per Hour : \$4.33
Cost Per Month : \$216.67

60/4000 Full + Planned Maintenance

Extended Warranty Plan Price : \$17300

Cost Per Hour : \$4.33
Cost Per Month : \$288.33

60/5000 Full + Planned Maintenance

Extended Warranty Plan Price : \$21900

Cost Per Hour : \$4.38
Cost Per Month : \$365.00



Bobcat is a Doosan company. Doosan is a global leader in construction equipment, power and water solutions, engines, and engineering, proudly serving customers and communities for more than a century. Bobcat®, the Bobcat logo and the colors of the Bobcat machine are registered trademarks of Bobcat Company in the United States and various other countries. ©2017 Bobcat Company. All rights reserved. | 49744-BAP0012

Bobcat Zero Tail Swing Models

Bobcat offers a range of zero tail swing excavators designed for versatility and efficiency in various job sites. Here are some of the key models and their features:

- **E38 Compact (Mini) Excavator:** Known for its leading horsepower and hydraulic performance, the E38 is designed for unrestricted rotation and comfort on confined worksites. It offers a range of packages, including an open canopy and an enclosed cab with advanced technology. Financing options are available, and the machine is designed to maximize productivity with its Hydra-Tilt™ attachment and nitrogen breaker system.

1

- **E35 (25 hp, Long-Arm):** The E35 is a best-selling compact excavator with a zero tail swing design. It features practical enhancements for durability, routine maintenance, and operator productivity. Options for versatility include a clamp-ready extendable arm, a long arm, and an angle blade.



Edgeller & Harper Farm Equipment

Quote Number: 966398
Effective Date: 12/09/2025
Valid Through: 12/31/2025

Ship To

CITY OF WEST PLAINS
Kristopher Bates
1602 SUNSET TERRACE
West plains, MO 65775
Work: (417) 256-7176 ext.2241
Kristopher.bates@westplains.gov

Kubota Dealer

Edgeller & Harper Farm
Equipment
4973 US Hwy. 160
West Plains, MO 65775
John Edgeller
Phone: 4172560420
Email:
jedgeller@edgellerandharper.net

Bill To

CITY OF WEST PLAINS
Kristopher Bates
1602 SUNSET TERRACE
West plains, MO 65775
Work: (417) 256-7176 ext.2241
Kristopher.bates@westplains.gov

KX033-4R3A - EXCAVATOR W/RUBBER TRACKS/AC CAB/ANGLE BLADE



Description	Manufacturer	Model #	Qty	MSRP	Price Each	Total
EXCAVATOR W/RUBBER TRACKS/AC CAB/ANGLE BLADE (Serial Number: KBCCZ48CCP3L20988)	Kubota	KX033-4R3A	1	\$66,378.00	\$45,194.74	\$45,194.74
HYD THUMB KIT(Serial Number: KBCCZ48CCP3L20988)	Kubota	K7910A	1	\$4,145.00	\$3,000.00	\$3,000.00
QUICK COUPLER(Serial Number: KBCCZ48CCP3L20988)	Kubota	K7870A	1	\$1,464.00	\$1,000.00	\$1,000.00
18" QA TRENCHING BUCKET	Kubota	K7874A	1	\$1,691.00	\$1,300.00	\$1,300.00

Cash Details

Equipment Total **	\$50,494.74
Additional Charges	\$0.00
Cash Sub-total	\$50,494.74

machine meets all specs and adds a angle blade and aux port to run thumb and aux , conventional swing 2year warranty std 2 year ext warranty available for 2300.00 machine is in stock and can be delivered any time service and parts are no problem

Kubota Disclaimer

Sales quote can only be provided by a participating Kubota dealer. Only Kubota and Kubota performance-matched Allied equipment are eligible. Inclusion of ineligible equipment may result in a higher blended APR. Stand Alone Kubota or Allied implements and attachments/accessories are subject to stand alone programs. Financing is available through Kubota Credit Corporation, U.S.A.; subject to credit approval. Program eligibility requirements are subject to change without notice and may be withdrawn without notice. Some exceptions



Edgeller & Harper Farm Equipment

Quote Number: 966398
Effective Date: 12/09/2025
Valid Through: 12/31/2025

Purchase Options

Purchase Type	Sub-Total **	Incentives	Total After Incentives	Est. Taxes	Equipment Total	Down Payment	Est. KTAC Insurance	Amount Financed at Rate	Amount Financed at 0%	Est. Monthly Payment *
Cash	\$50,494.74	\$0.00	\$50,494.74	\$0.00	\$50,494.74	--	--	--	--	--

* Blending of APR may occur if the amount financed exceeds 125% of max invoice of New Kubota and selected New Allied Implements/Accessories using non-Kubota rates. KTAC, Orange Protection and K-Maintenance are blended using 0%.

apply. See dealer or go to KubotaUSA.com for more information.



K Series

KX033-4R3A

*** EQUIPMENT IN STANDARD MACHINE ***

FEATURES

Half Pitched Rubber Tracks or (Steel Tracks)
ROPS/OPG (Top Guard, Level 1)
4 Post Canopy or Heated Cab with A/C
Suspension Seat
Kubota 3 Hydraulic Pump Design
1 Gear; 2 Variable Displacement Pumps
Hydraulic Joystick Controls with Wrist Rests
Hydraulic Accumulator
Two Operating Pattern Selection System
Standard Front Dozer Blade
360 Degree Full Rotation
70° Left and 48° Right Boom Swing Angle
15.8 GPM Adjustable Auxiliary Hydraulics Port
With Diverter Valve
Five Second Quick Preheat System
Key Switch Stop System
Self Bleed Fuel System
Two Speed Travel
Auto Idle
Thumb Bracket and Relief Valves
Swivel Negative Brake
Travel Negative Brake
Third Line Return (Hydraulic)

DIMENSIONS AND OPERATING WEIGHT

KX033-4R3A, Rubber Tracks, ROPS/OPG (Top Guard,
Level 1) Heated Cab with A/C, Angle Blade
Overall Length 15' 6"
Overall Width 5' 1"
Overall Height 8' 1"
Operating Weight* 7,742 lbs.
Ground Clearance 11.4 "
* Includes operator's weight, 175 lbs.

ENGINE

Kubota D1703M-DI-E4
3 Cylinder, 4 Cycle
24.8 Gross HP (SAE J1995) @ 2200 RPM
23.2 Net HP (SAE J1349) @ 2200 RPM

OPERATIONAL DIMENSIONS

Max Digging Depth 10' 6"
Max Digging Radius @ Ground Level 16' 10"
Max Vertical Digging Depth 7' 4"
Max Dumping Height 11' 7"

DOZER BLADE DIMENSIONS

Width 61"
Height 13.5" / 15.2" Angle
Lift Above Ground 14.4" / 15.9" Angle
Drop Below Ground 14.8" / 16.1" Angle

PERFORMANCE

Digging Force @ Bucket 8138 lbs
Digging Force @ Dipper Arm 3867 lbs
Travel Speed (Low/High) 1.9/2.9 mph
Traction Force (Low) 6091 lbs
Lift Capacity 3230 lbs
• Over Front
• Blade Grounded
• 2 Ft. Load Point Height
• 8 Ft. Load Radius



Orange Protection

It is a true Kubota warranty - an extension of the basic warranty. Backed by the manufacturer.

There is no deductible.

Orange Protection can be financed with the sale of the machine.

Repairs are performed by an Authorized Kubota dealer who will use genuine Kubota parts.

Orange Protection is transferable.

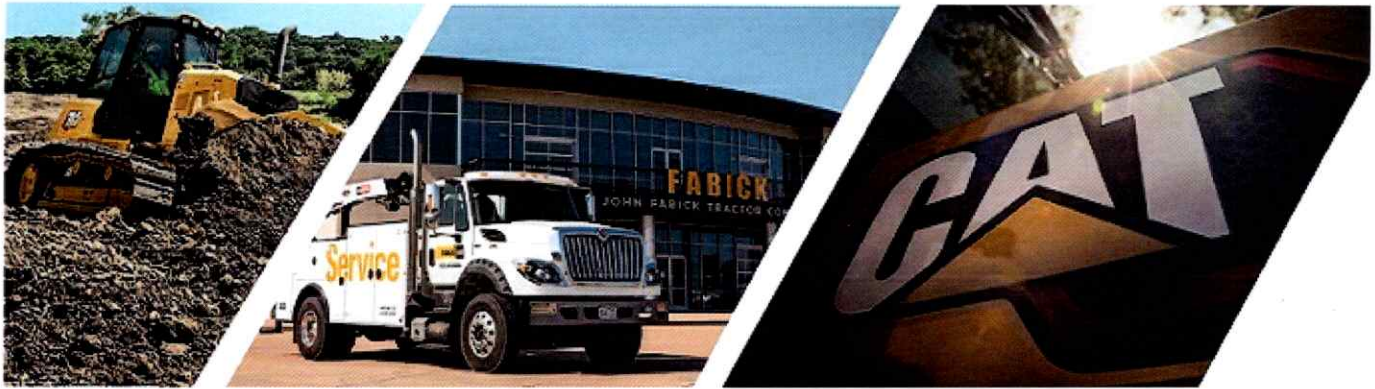
You get comprehensive machine coverage which means peace of mind and protection on your investment.

KTAC

Benefits of a Term Policy through KTAC*:

1. Meets the insurance requirement for Kubota Credit Corporation, U.S.A
2. Original Sales Price Protection for the first 60 months (plus taxes and fees)
3. Locked in rate for the term of the contract
4. Premium included with retail contract payment
5. Low \$250 deductible per occurrence
6. Dedicated claims service

*This is a summary of the Kubota-Endorsed Property Damage Insurance. This information is not a complete description of all terms, conditions, and exclusions applicable. Actual coverage is subject to the language of the policy issued. This policy is underwritten and issued by Ohio Indemnity Company. Policy is offered and valid only to residents located in the fifty states of the United States of America. Policy is not available for U.S. districts and territories, Canada, or Mexico.



Proposal

QUOTE NUMBER 236416-01

Dec 08, 2025

CATERPILLAR INC. 303-07

PREPARED FOR
CITY OF WEST PLAINS

The FABICK logo consists of the word "FABICK" in a bold, italicized, black sans-serif font, set against a solid yellow rectangular background.

Dec 08, 2025

CITY OF WEST PLAINS
PO BOX 710
WEST PLAINS, Missouri, 65775-0710

Dear Kristopher Bates,

We are pleased to offer you the following proposal for your consideration.
One (1) Caterpillar Inc. Model: 303-07 Mini Excavator (CCE) with all standard equipment in addition to the specifications listed below:

STOCK NUMBER: 24M06953
SERIAL NUMBER: 0NXY02152
YEAR: 2025
SMU: 4.10

Thank you for your interest in Fabick Cat and Caterpillar products. Please know that we sincerely appreciate your consideration and look forward to answering any questions you may have moving forward. Feel free to contact me directly at any time.

Sincerely,

Jason Leeper
Machine Sales Representative
Fabick Cat
jason.leeper@fabickcat.com
(417) 988-5378

This quotation is valid for 30 days, after which time we reserve the right to re-quote

One (1) Caterpillar Inc. Model: 303-07 Mini Excavator (CCE) with all standard equipment in addition to the specifications listed below:

STANDARD FEATURES

POWERTRAIN -Cat C1.1 turbo engine (U.S. EPA Tier 4 -(U.S EPA Tier 4 Final/EU Stage V) -(Japan MLIT Tier 3) -Automatic engine idle -Automatic engine shutdown -Automatic two speed travel -Fuel water separator

UNDERCARRIAGE -Track, 300 mm (11.8") -Dozer blade(BOCE) with float -Tie downs on track frame

HYDRAULICS -Variable displacement piston pump -Smart tech electronic pump -Load sensing/flow sharing hydraulics -Automatic swing brake -Hydraulic lockout - all controls - One and two way auxiliary flow -Continuous auxiliary flow -Auxiliary line quick disconnects -Bio oil capable

ELECTRICAL -12 volt electrical system -Software (machine and monitor) -65 ampere alternator -650CCA maintenance free battery -Battery disconnect -Signaling/warning horn -12 volt power socket

OPERATOR ENVIRONMENT -Cab sound pressure 93dB(A) ISO 6395 -Coat hook -Next generation color LCD monitor (IP66) --Fuel lever and coolant temperature -gauges -- Maintenance and machine monitoring --Performance and machine adjustments --Numeric security code --Multiple languages --Hour meter with wake up switch -Cup holder -Utility space for mobile phone -ROPS - ISO 12117-2:2008 -TOPS - ISO 12117:1997 -Top guard ISO 10262: 1998 Level I -Adjustable wrist rests -Non suspension vinyl seat -Retractable high visibility seat belt -Removable washable floormat -Tilt operator station -Storage pocket - Skylight -Mounting bosses for front guard

OTHER STANDARD EQUIPMENT -Caterpillar corporate "one key" system -Door locks on cab door and external -enclosure doors -Lockable fuel cap -Beacon socket -Joystick travel and steering mode -Travel cruise control -Boom light

INSTRUCTIONS -REGIONAL STANDARD EQUIPMENT INCLUDES -United States and Canada --Accumulator --Auxilliary hydraulic lines --Product link PLE243 (regulations apply) --Retractable high visibiliy seat belt -(75 mm/3 in) --Ecology drain - engine --Control pattern changer -Japan --65 ampere alternator --Non suspension vinyl seat --Retractable high visibiliy seat belt -(50 mm/2 in)

FABICK

MACHINE CONFIGURATION

303 07A CR MHE CFG3C	640-7483
303 07A CR HYD EXCAVATOR	552-5480
SEAT, SUSPENSION, FABRIC	519-9265
TRAVEL LEVERS AND PEDALS	519-9283
LIGHTS, LED, FRONT&REAR	521-9512
CAT KEY, WITH PASS CODE OPTION	525-4465
FILM, PRODUCT LINK, ANSI	541-4787
2 WAY CONTROL	542-1495
FILM, INC. CANADA	542-1504
BOOM LIGHT, LED	542-8886
UNDERCARRIAGE, FIXED, STD BLD	546-1419
CONTROL, 1ST AUX, JOYSTICK	546-1449
DRAIN, ECOLOGY	546-1451
BOOM, STANDARD	546-1517
CAB, WITH HEAT AND A/C	548-9862
LINES, BOOM W/O BLCV	552-5495
LINES, STICK W/O SLCV	552-5497
LINES, BUCKET, LONG STICK	556-1391
SOFTWARE, PROPORTIONAL CONTROL	557-1709
SOFTWARE, STICK STEER CONTROL	557-1710
SOFTWARE, CODED START	557-1713
STICK, LONG, W/ THUMB BRACKET	558-1741
ALARM, TRAVEL	558-1744
TRACK, 12", RUBBER	566-2913
INSTRUCTIONS, ANSI	569-3571
LINKAGE, BUCKET, W/LIFTING EYE	571-9087
LINES, 1ST AUX, LONG STICK	575-7225
BLADE, FIXED, BOCE	576-7656
ENGINE, MLIT STP3/EPA TIER 4F	577-9794
FILM, CAB A/C	578-0230
MONITOR NEXT GEN, NO CAMERA	580-7178
ACCUMULATOR	588-2227
CWT EXTRA, 550LBS	592-1442
FLOORMAT, CAB, W/TRAVEL	594-7890
FILM, ROPS, ISO	595-3179
SEAT BELT, 3" RETRACTABLE	599-7202
HYDRAULIC OIL, STD	601-7968
LANE 2 ORDER	0P-9002
PRODUCT LINK, CELLULAR PL243	573-9631
INTEGRATED RADIO V2	641-2472
SHIPPING/STORAGE PROTECTION	0P-2266
SERIALIZED TECHNICAL MEDIA KIT	421-8926
PACKING, LAST MILE PROGRAM	0P-4299
COUPLER, PG, MAN.D.LOCK, 3-4T	444-7494 -- \$1,504.00
PINS, BUCKET, 40MM	154-2638
BUCKET-HD, 18", 2.9 FT3, 3T	464-9902 -- \$1,112.00
THUMB, HYDRAULIC, 3-4T	452-2740 -- \$2,922.00

"TO EVER SERVE OUR CUSTOMERS BETTER"

PRICING INFORMATION

PRICE AS EQUIPPED	\$62,903.64
SUB TOTAL	\$62,903.64
SALES TAX (0%)	\$0.00
BALANCE DUE	\$62,903.64

Machine - \$52,254.64

EQUIPMENT PROTECTION PLAN

Standard Warranty: - \$0.00

24 Month or 2000 Hours,
Premier For new machines
and work tools/attachments
the warranty period is
12-months/unlimited hours,
starting from date of delivery
to the first user.

Extended Protection Plan: - \$4,611.00

303-84 MO/5000 HR PREMIER,
Prepaid Travel for 84 months/5000 hours

ESTIMATED DELIVERY - \$500.00

Unit is currently available.

FINANCE OPTIONS

CAT Financial – 4.99% interest rate, currently

Sourcewell Number

#011723-CAT

"TO EVER SERVE OUR CUSTOMERS BETTER



Cat[®] 303 CR

MINI EXCAVATOR

FEATURES:

The Cat[®] 303 CR Mini Excavator delivers power and performance in a compact size to help you work in a wide range of applications.

ALL DAY COMFORT

- Choose either a canopy or a sealed and pressurized cab which can be equipped with air conditioning, adjustable wrist rests, and a suspension seat option to help keep you working comfortably all day long.

EASY TO OPERATE

- Controls are easy to use and the intuitive Next Generation LCD monitor provides easy to read machine information. An advanced touchscreen monitor can also be equipped.

STICK STEER TRAVEL MODE

- Moving around the job site is even easier with the Cat Stick Steer option. Easily switch from traditional travel controls with levers and pedals to joystick controls to move the machine and to operate the blade. The benefit of less effort and improved control is in your hands!

BIG PERFORMANCE IN A COMPACT DESIGN

- Strong lift and dig performance helps you get the job done faster. The compact radius design lets you access and work in the tightest areas. Dozer float allows for easy clean up.

SAFETY ON THE JOB SITE

- Your safety is our top priority. The Cat mini excavator is designed to help keep you safe on the job. Courtesy work lights and a fluorescent retractable seat belt with optional seat belt reminder system are just a couple of the safety features we've built into the machine.

SIMPLE SERVICE FOR LESS DOWNTIME

- Maintenance is quick and easy on the Cat mini excavator. Routine check points are easy to access at ground level through the side doors. The unique tilt up cab or canopy lets you reach additional service areas when needed.

LOWER OPERATING COSTS

- Equipped with features such as auto idle, auto engine shutdown, and efficient hydraulics with a variable displacement pump, the Cat mini excavator was designed with reducing your operating costs in mind.

UNMATCHED DEALER SUPPORT

- Your Cat dealer is here to help you reach your business goals. From providing equipment solutions to operator training to service needs and beyond, your Cat dealer is ready to help.



303 CR Mini Excavator

Specifications

Engine

Engine Model	C1.1 Turbo	
Net Power @ 2,400 rpm		
ISO 9249, 80/1269/EEC	17.6 kW	23.6 hp
Gross Power @ 2,400 rpm		
SAE J1995:2014	18.4 kW	24.7 hp
Bore	77.0 mm	3.0 in
Stroke	81.0 mm	3.2 in
Displacement	1.1 L	69.0 in ³

- Advertised power is tested per the specified standard in effect at the time of manufacture.

Weights

Minimum Operating Weight with Canopy*	3025 kg	6,670 lb
Maximum Operating Weight with Canopy**	3425 kg	7,552 lb
Minimum Operating Weight with Cab*	3140 kg	6,924 lb
Maximum Operating Weight with Cab**	3545 kg	7,817 lb
EU: CE Plate Weight with Canopy***	3080 kg	6,791 lb
EU: CE Plate Weight with Cab***	3180 kg	7,012 lb

*Minimum Weight is based on fixed rubber tracks, operator, full fuel tank, standard stick, blade, bucket and no extra counterweight.

**Maximum Weight is based on steel tracks, operator, full fuel tank, long stick, blade, bucket and extra counterweight.

***CE Plate Weight is based on the most common EU configuration. Includes 75 kg (165 lb) operator and full fuel tank and excludes bucket.

Weight Increase from Minimum Configuration

Cab	115 kg	254 lb
Counterweight (light)	100 kg	221 lb
Counterweight (extra)	250 kg	551 lb
Long Stick	25 kg	55 lb
Steel Tracks	125 kg	276 lb

Travel System

Travel Speed – High	4.5 km/h	2.8 mph
Travel Speed – Low	2.6 km/h	1.6 mph
Maximum Traction Force – High Speed	14.7 kN	3,305 lbf
Maximum Traction Force – Low Speed	31.4 kN	7,059 lbf
Ground Pressure – Minimum Weight	27.6 kPa	4.0 psi
Ground Pressure – Maximum Weight	32.3 kPa	4.7 psi
Gradeability (maximum)	30 degrees	

Service Refill Capacities

Cooling System	4.0 L	1.1 gal
Engine Oil	4.0 L	1.1 gal
Fuel Tank	45.0 L	11.9 gal
Hydraulic Tank	18.0 L	4.8 gal
Hydraulic System	35.0 L	9.2 gal

Hydraulic System

Load Sensing Hydraulics with Variable Displacement Piston Pump		
Pump Flow @ 2,400 rpm	100 L/min	26 gal/min
Operating Pressure – Equipment	245 bar	3,553 psi
Operating Pressure – Travel	245 bar	3,553 psi
Operating Pressure – Swing	176 bar	2,553 psi
Auxiliary Circuit – Primary		
Flow*	65 L/min	17 gal/min
Pressure*	245 bar	3,553 psi
Auxiliary Circuit – Secondary		
Flow*	25 L/min	7.0 gal/min
Pressure*	245 bar	3,553 psi
Digging Force – Stick (standard)	16.6 kN	3,732 lbf
Digging Force – Stick (long)	14.8 kN	3,327 lbf
Digging Force – Bucket	28.4 kN	6,385 lbf

*Flow and pressure are not combinable. Under load, as flow rises pressure goes down.

Swing System

Machine Swing Speed	9.0 rpm
Boom Swing – Left	75 Degrees
Boom Swing – Right	50 Degrees

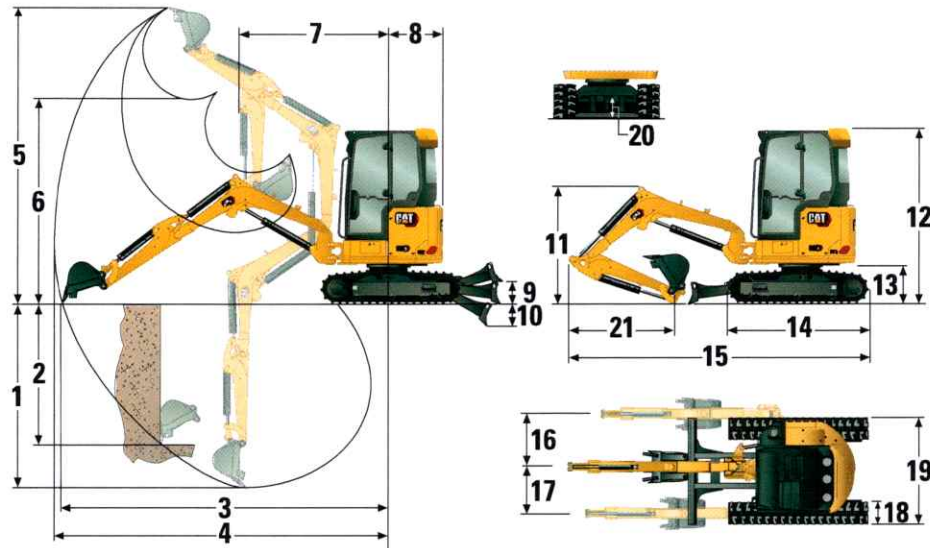
Blade

Width	1550 mm	61.0 in
Height	350 mm	13.8 in

Certification – Cab and Canopy

Roll Over Protective Structure (ROPS)	ISO 12117-2:2008
Tip Over Protective Structure (TOPS)	ISO 12117:1997
Top Guard	ISO 10262:1998 (Level I)

303 CR Mini Excavator



Dimensions

	Standard Stick	Long Stick
1 Dig Depth	2650 mm (104.3 in)	2950 mm (116.1 in)
2 Vertical Wall	1820 mm (71.7 in)	2070 mm (81.5 in)
3 Maximum Reach at Ground Level	4830 mm (190.2 in)	5110 mm (201.2 in)
4 Maximum Reach	4980 mm (196.1 in)	5240 mm (206.3 in)
5 Maximum Dig Height	4510 mm (177.6 in)	4650 mm (183.1 in)
6 Maximum Dump Clearance	3170 mm (124.8 in)	3310 mm (130.3 in)
7 Boom in Reach	1750 mm (68.9 in)	1910 mm (75.2 in)
8 Tail Swing		
without Counterweight	775 mm (30.5 in)	775 mm (30.5 in)
with Counterweight (light)	845 mm (33.3 in)	845 mm (33.3 in)
with Counterweight (extra)	890 mm (35.0 in)	890 mm (35.0 in)
9 Maximum Blade Height	385 mm (15.2 in)	385 mm (15.2 in)
10 Maximum Blade Depth	535 mm (21.1 in)	535 mm (21.1 in)
11 Boom Height in Shipping Position	1600 mm (63.0 in)	1920 mm (75.6 in)
12 Overall Shipping Height	2480 mm (97.6 in)	2480 mm (97.6 in)
13 Swing Bearing Height	570 mm (22.4 in)	570 mm (22.4 in)
14 Overall Undercarriage Length	2070 mm (81.5 in)	2070 mm (81.5 in)
15 Overall Shipping Length†	4510 mm (177.6 in)	4560 mm (179.5 in)
16 Boom Swing Right	870 mm (34.3 in)	870 mm (34.3 in)
17 Boom Swing Left	640 mm (25.2 in)	640 mm (25.2 in)
18 Track Belt/Shoe Width	300 mm (11.8 in)	300 mm (11.8 in)
19 Track Width	1550 mm (61.0 in)	1550 mm (61.0 in)
20 Ground Clearance	310 mm (12.2 in)	310 mm (12.2 in)
21 Stick Length	1260 mm (49.6 in)	1560 mm (61.4 in)

†Overall Shipping Length depends on blade position during shipment.

303 CR Mini Excavator

Cab

Lift Capacities – Minimum Configuration			Lift Point Radius – 2 m (6.6 ft)			Lift Point Radius – 3 m (9.8 ft)			Lift Point Radius (Maximum)			
			Over Front			Over Front			Over Front			m (ft)
			Blade Down	Blade Up	Over Side	Blade Down	Blade Up	Over Side	Blade Down	Blade Up	Over Side	
3 m (9.8 ft)	Standard Stick	kg (lb)				*792 (*1,746)	630 (1,389)	548 (1,208)	*848 (*1,870)	441 (972)	385 (849)	3.67 (12.0)
	Long Stick	kg (lb)							*741 (*1,634)	376 (829)	327 (721)	3.99 (13.1)
2 m (6.6 ft)	Standard Stick	kg (lb)				*998 (*2,200)	601 (1,325)	520 (1,146)	*864 (*1,905)	349 (769)	303 (668)	4.16 (13.6)
	Long Stick	kg (lb)				*839 (*1,850)	604 (1,332)	522 (1,151)	*767 (*1,691)	304 (670)	263 (580)	4.43 (14.5)
1 m (3.3 ft)	Standard Stick	kg (lb)				*1352 (*2,981)	553 (1,219)	475 (1,047)	*903 (*1,991)	321 (708)	278 (613)	4.29 (14.1)
	Long Stick	kg (lb)				*1227 (*2,705)	549 (1,210)	470 (1,036)	*808 (*1,781)	281 (619)	242 (534)	4.55 (14.9)
0 m (0 ft)	Standard Stick	kg (lb)	*1280 (*2,822)	1003 (2,211)	823 (1,814)	*1522 (*3,355)	525 (1,157)	448 (988)	*955 (*2,105)	335 (739)	289 (637)	4.11 (13.5)
	Long Stick	kg (lb)	*1277 (*2,815)	974 (2,147)	795 (1,753)	*1480 (*3,263)	511 (1,127)	433 (955)	*862 (*1,900)	290 (639)	249 (546)	4.39 (14.4)

Minimum Weight includes cab, rubber tracks, no extra counterweight, operator, full fuel tank and blade.

Lift Capacities – Maximum Configuration			Lift Point Radius – 2 m (6.6 ft)			Lift Point Radius – 3 m (9.8 ft)			Lift Point Radius (Maximum)			
			Over Front			Over Front			Over Front			m (ft)
			Blade Down	Blade Up	Over Side	Blade Down	Blade Up	Over Side	Blade Down	Blade Up	Over Side	
3 m (9.8 ft)	Standard Stick	kg (lb)				*792 (*1,746)	*792 (*1,746)	647 (1,426)	*848 (*1,870)	573 (1,263)	464 (1,023)	3.67 (12.0)
	Long Stick	kg (lb)							*741 (*1,634)	495 (1,091)	399 (880)	3.99 (13.1)
2 m (6.6 ft)	Standard Stick	kg (lb)				*998 (*2,200)	773 (1,704)	620 (1,367)	*864 (*1,905)	461 (1,016)	372 (820)	4.16 (13.6)
	Long Stick	kg (lb)				*839 (*1,850)	776 (1,711)	622 (1,371)	*767 (*1,691)	408 (899)	328 (723)	4.43 (14.5)
1 m (3.3 ft)	Standard Stick	kg (lb)				*1352 (*2,981)	725 (1,598)	576 (1,270)	*903 (*1,991)	429 (946)	345 (761)	4.29 (14.1)
	Long Stick	kg (lb)				*1227 (*2,705)	721 (1,590)	571 (1,259)	*808 (*1,781)	381 (840)	304 (670)	4.55 (14.9)
0 m (0 ft)	Standard Stick	kg (lb)	*1280 (*2,822)	*1280 (*2,822)	990 (2,183)	*1522 (*3,355)	697 (1,537)	549 (1,210)	*955 (*2,105)	449 (990)	360 (794)	4.11 (13.5)
	Long Stick	kg (lb)	*1277 (*2,815)	*1277 (*2,815)	962 (2,121)	*1480 (*3,263)	683 (1,506)	535 (1,179)	*862 (*1,900)	395 (871)	314 (692)	4.39 (14.4)

Maximum Weight includes cab, steel tracks, extra counterweight, operator, full fuel tank and blade.

Canopy

Lift Capacities – Minimum Configuration			Lift Point Radius – 2 m (6.6 ft)			Lift Point Radius – 3 m (9.8 ft)			Lift Point Radius (Maximum)			
			Over Front			Over Front			Over Front			m (ft)
			Blade Down	Blade Up	Over Side	Blade Down	Blade Up	Over Side	Blade Down	Blade Up	Over Side	
3 m (9.8 ft)	Standard Stick	kg (lb)				*792 (*1,746)	603 (1,329)	526 (1,160)	*848 (*1,870)	420 (926)	368 (811)	3.67 (12.0)
	Long Stick	kg (lb)							*741 (*1,634)	357 (787)	312 (688)	3.99 (13.1)
2 m (6.6 ft)	Standard Stick	kg (lb)				*998 (*2,200)	574 (1,265)	498 (1,098)	*864 (*1,905)	331 (730)	289 (637)	4.16 (13.6)
	Long Stick	kg (lb)				*839 (*1,850)	576 (1,270)	500 (1,102)	*767 (*1,691)	288 (635)	250 (551)	4.43 (14.5)
1 m (3.3 ft)	Standard Stick	kg (lb)				*1352 (*2,981)	526 (1,160)	453 (999)	*903 (*1,991)	304 (670)	264 (582)	4.29 (14.1)
	Long Stick	kg (lb)				*1227 (*2,705)	522 (1,151)	448 (988)	*808 (*1,781)	264 (582)	228 (503)	4.55 (14.9)
0 m (0 ft)	Standard Stick	kg (lb)	*1280 (*2,822)	952 (2,099)	784 (1,728)	*1522 (*3,355)	498 (1,098)	426 (939)	*955 (*2,105)	317 (699)	275 (606)	4.11 (13.5)
	Long Stick	kg (lb)	*1277 (*2,815)	923 (2,035)	756 (1,667)	*1480 (*3,263)	483 (1,065)	411 (906)	*862 (*1,900)	273 (602)	235 (518)	4.39 (14.4)

Minimum Weight includes canopy, rubber tracks, no extra counterweight, operator, full fuel tank and blade.

Lift Capacities – Maximum Configuration			Lift Point Radius – 2 m (6.6 ft)			Lift Point Radius – 3 m (9.8 ft)			Lift Point Radius (Maximum)			
			Over Front			Over Front			Over Front			m (ft)
			Blade Down	Blade Up	Over Side	Blade Down	Blade Up	Over Side	Blade Down	Blade Up	Over Side	
3 m (9.8 ft)	Standard Stick	kg (lb)				*792 (*1,746)	774 (1,706)	627 (1,382)	*848 (*1,870)	552 (1,217)	449 (990)	3.67 (12.0)
	Long Stick	kg (lb)							*741 (*1,634)	476 (1,049)	385 (849)	3.99 (13.1)
2 m (6.6 ft)	Standard Stick	kg (lb)				*998 (*2,200)	746 (1,645)	600 (1,323)	*864 (*1,905)	443 (977)	359 (791)	4.16 (13.6)
	Long Stick	kg (lb)				*839 (*1,850)	748 (1,649)	601 (1,325)	*767 (*1,691)	391 (862)	315 (694)	4.43 (14.5)
1 m (3.3 ft)	Standard Stick	kg (lb)				*1352 (*2,981)	698 (1,539)	555 (1,224)	*903 (*1,991)	412 (908)	332 (732)	4.29 (14.1)
	Long Stick	kg (lb)				*1227 (*2,705)	694 (1,530)	550 (1,213)	*808 (*1,781)	365 (805)	292 (644)	4.55 (14.9)
0 m (0 ft)	Standard Stick	kg (lb)	*1280 (*2,822)	1269 (2,798)	954 (2,103)	*1522 (*3,355)	670 (1,477)	529 (1,166)	*955 (*2,105)	431 (950)	346 (763)	4.11 (13.5)
	Long Stick	kg (lb)	*1277 (*2,815)	1240 (2,734)	927 (2,044)	*1480 (*3,263)	655 (1,444)	514 (1,133)	*862 (*1,900)	378 (833)	301 (664)	4.39 (14.4)

Maximum Weight includes canopy, steel tracks, extra counterweight, operator, full fuel tank and blade.

*The above loads are in compliance with hydraulic excavator lift capacity rating standard ISO 10567:2007 and they do not exceed 87% of hydraulic lifting capacity or 75% of tipping capacity. The excavator bucket weight is not included on this chart. Lifting capacities are for standard stick.

Standard and Optional Equipment

Standard and optional equipment may vary. Consult your Cat dealer for details.

	Standard	Optional		Standard	Optional
ENGINE			OPERATOR ENVIRONMENT (continued)		
Cat® C1.1 Turbo Engine (U.S. EPA Tier 4 Final/ EU Stage V)	✓		Fabric Suspension Seat (Cab only)	✓	
Automatic Engine Idle	✓		Vinyl Suspension Seat (Canopy only)	✓	
Automatic Engine Shutdown	✓		Vinyl Non-Suspension Seat (Canopy only) (not available in all regions)		✓
Automatic Two Speed Travel	✓		Hydraulic Lockout – All Controls	✓	
Fuel Water Separator	✓		Retractable High Visibility Seat Belt (75 mm/3 in)	✓	
Power on Demand (not available in all regions)	✓		Seat Belt Reminder System		✓
Variable Displacement Piston Pump	✓		Coat Hook	✓	
Load Sensing/Flow Sharing Hydraulics	✓		Cup Holder	✓	
HYDRAULICS			Storage Pocket	✓	
Smart Tech Electronic Pump	✓		Skylight	✓	
Accumulator	✓		Mounting Bosses for Front	✓	
Automatic Swing Brake	✓		Signaling/Warning Horn	✓	
Auxiliary Hydraulic Lines	✓		Interior Light (Cab only)	✓	
One and Two Way Auxiliary Flow	✓		Boom Light, Halogen (not available in all regions)	✓	
Continuous Auxiliary Flow	✓		LED Front Lights		✓
Auxiliary Line Quick Disconnects	✓		LED Front and Rear Lights		✓
OPERATOR ENVIRONMENT			LED Boom Light		✓
Tilt-up Canopy or Tilt-Up Cab	✓		Utility Space for Mobile Phone	✓	
Cab with Air Conditioning		✓	Mirrors Left and Right		✓
Cab with Heater		✓	Radio – Bluetooth®, Auxiliary, Microphone, USB (charging only) (Cab only)		✓
ROPS – ISO 12117-2:2008	✓		Next Generation Color LCD Monitor (IP66)	✓	
TOPS – ISO 12117:1997	✓		– Fuel Level and Coolant Temperature Gauges	✓	
Stick Steer Mode	✓		– Maintenance and Machine Monitoring	✓	
Travel Cruise Control	✓		– Performance and Machine Adjustments	✓	
Control Pattern Changer (optional in some regions)	✓		– Numeric Security Code	✓	
Adjustable Wrist Rests	✓		– Multiple Languages	✓	
Washable Floor Mat	✓		– Hour Meter with Wake Up Switch	✓	
Travel Pedals and Hand Levers	✓		– Jog Dial (cab only)	✓	
No Travel Pedals and Hand Levers (optional in some regions)		✓	Next Generation Advanced Monitor		✓
Machine Security	✓		– Touch Screen		✓
Standard Key with Pass Code	✓		– Site Reference System		✓
Push to Start with Key Fob/Pass Code		✓	– High Definition Camera Capable (IP68 and IP69K)		✓
			– Numeric Security Code		✓

(continued on next page)

303 CR Mini Excavator

Standard and Optional Equipment *(continued)*

Standard and optional equipment may vary. Consult your Cat dealer for details.

	Standard	Optional		Standard	Optional
UNDERCARRIAGE			ELECTRICAL		
Rubber Belt (300 mm/11.8 in wide)	✓		12 Volt Battery	✓	
Steel Track (300 mm/11.8 in wide)		✓	Software (machine and monitor)	✓	
Dozer Blade	✓		Maintenance Free Battery	✓	
Dozer Blade Float	✓		Battery Disconnect	✓	
Tie Downs on Track Frame	✓		Signaling/Warning Horn	✓	
BOOM, STICK AND LINKAGES			12 Volt Power Socket	✓	
One Piece Boom (2200 mm/86.6 in)	✓		Product Link™ PL243 (regulations apply)		✓
Standard Stick (1260 mm/49.6 in)	✓		Product Link PLE643 (regulations apply)		✓
Long Stick (1560 mm/61.4 in)		✓	Travel Alarm (standard in some regions)		✓
Front Shovel Capable	✓		GUARDING		
Pin-On	✓		Top Guard ISO 10262:1998 Level I	✓	
Dual Lock Manual Coupler		✓	Polycarbonate Half Height Front Guard (Canopy only)		✓
Hydraulic Coupler		✓	Polycarbonate Front Guard (ISO 10262:1998 Level I and EN356 P5A)		✓
Thumb Ready (not available in all regions)	✓		OTHER		
Certified Lifting Eye (optional in some regions)	✓		Bio Oil Capable		✓
Attachments including Couplers, Thumbs, Buckets, Augers and Hammers		✓	Eco Drain		✓
2nd Auxiliary Hydraulic Lines		✓	Water Jacket Heater		✓
Bucket Divert Lines		✓	Extra Counterweight (250 kg/551 lb)		✓
Boom Lowering Check Valve		✓			
Stick Lowering Check Valve		✓			
Hydraulic Quick Coupler Lines (not available in all regions)		✓			

303 CR Environmental Declaration

The following information applies to the machine at the time of final manufacture as configured for sale in the regions covered in this document. The content of this declaration is valid as of the date issued; however, content related to machine features and specifications are subject to change without notice. For additional information, please see the machine's Operation and Maintenance Manual.

For more information on sustainability in action and our progress, please visit <https://www.caterpillar.com/en/company/sustainability>.

Engine

- The Cat® C1.1 engine meets U.S. EPA Tier 4 Final and EU Stage V emission standards.
- Cat diesel engines are required to use ULSD (ultra-low sulfur diesel fuel with 15 ppm of sulfur or less) or ULSD blended with the following lower-carbon intensity fuels up to:
 - ✓ 20% biodiesel FAME (fatty acid methyl ester)*
 - ✓ 100% renewable diesel, HVO (hydrotreated vegetable oil) and GTL (gas-to-liquid) fuels

Refer to guidelines for successful application. Please consult your Cat dealer or "Caterpillar Machine Fluids Recommendations" (SEBU6250) for details.

**Engines with no aftertreatment devices can use higher blends, up to 100% biodiesel (for use of blends higher than 20% biodiesel, consult your Cat dealer).*

Air Conditioning System

- The air conditioning system on this machine contains the fluorinated greenhouse gas refrigerant R134a (Global Warming Potential = 1430). The system contains 1.0 kg (2.20 lb) of refrigerant which has a CO₂ equivalent of 1.430 metric tonnes (1.58 tons).

Paint

- Based on best available knowledge, the maximum allowable concentration, measured in parts per million (PPM), of the following heavy metals in paint are:
 - Barium < 0.01%
 - Cadmium < 0.01%
 - Chromium < 0.01%
 - Lead < 0.01%

Sound Performance

Operator Sound Pressure* 72 dB(A) (ISO 6396:2008)

Average Exterior Sound Pressure** 99 dB(A) (ISO 6395:2008)

*The declared dynamic operator sound pressure levels per ISO 6396:2008. The measurements were conducted with the cab doors and windows closed.

**The labeled sound power level for the CE marked configurations when measured according to the test procedure and conditions specified in 2000/14/EC.

Oils and Fluids

- Caterpillar factory fills with ethylene glycol coolants. Cat Diesel Engine Antifreeze/Coolant (DEAC) and Cat Extended Life Coolant (ELC) can be recycled. Consult your Cat dealer for more information.
- Cat Bio HYDO™ Advanced is an EU Ecolabel approved biodegradable hydraulic oil.
- Additional fluids are likely to be present, please consult the Operations and Maintenance Manual or the Application and Installation guide for complete fluid recommendations and maintenance intervals.

Features and Technology

- The following features and technology may contribute to fuel savings and/or carbon reduction. Features may vary. Consult your Cat dealer for details.
 - Advanced hydraulic systems balance power and efficiency
 - Power On Demand provides full time efficiency and power when you need it, and is transparent to the operator
 - Auto idle and auto engine shutdown
 - Extended maintenance intervals reduce fluid and filter consumption
 - Remote Flash and Remote Troubleshoot (if equipped)

Recycling

- The materials included in machines are categorized as below with approximate weight percentage. Because of variations of product configurations, the following values in the table may vary.

Material Type	
Steel	65.26%
Iron	13.07%
Rubber	8.59%
Other	3.04%
Nonferrous Metal	2.93%
Plastic	2.67%
Fluid	2.35%
Uncategorized	0.85%
Mixed-Metal and Nonmetal	0.68%
Mixed-Metal	0.54%
Mixed-Nonmetallic	0.02%
Total	100%

- A machine with higher recyclability rate will ensure more efficient usage of valuable natural resources and enhance End-of-Life value of the product. According to ISO 16714 (Earth-moving machinery – Recyclability and recoverability – Terminology and calculation method), recyclability rate is defined as percentage by mass (mass fraction in percent) of the new machine potentially able to be recycled, reused or both.

All parts in the bill of material are first evaluated by component type based on a list of components defined by the ISO 16714 and Japan CEMA (Construction Equipment Manufacturers Association) standards. Remaining parts are further evaluated for recyclability based on material type.

Because of variations of product configurations, the following values in the table may vary.

Recyclability	95%
---------------	-----

- The data provided above was based on the product configuration as provided by the individual product group.

303 CR Mini Excavator

For more complete information on Cat products, dealer services, and industry solutions, visit us on the web at www.cat.com

© 2023 Caterpillar
All rights reserved

Materials and specifications are subject to change without notice. Featured machines in photos may include additional equipment. See your Cat dealer for available options.

CAT, CATERPILLAR, LET'S DO THE WORK, their respective logos, "Caterpillar Corporate Yellow," the "Power Edge" and Cat "Modern Hex" trade dress as well as corporate and product identity used herein, are trademarks of Caterpillar and may not be used without permission.

AEHQ8350-01 (02-2023)
Replaces AEHQ8350-00
Build Number: 07A
(Global excluding
China and Japan)

