

AN ORDINANCE PROHIBITING THE PARKING OF MOTOR VEHICLES ON HOWELL AVENUE FROM OLDEN STREET SOUTH TO BRATTON AVENUE, EAST OLDEN STREET 325 FEET WEST OF HOWELL AVENUE, THIRD STREET 325 FEET WEST OF HOWELL AVENUE, AND EAST OLDEN STREET FROM HOWELL AVENUE TO DAVIDSON STREET.

WHEREAS, parking on portions of Howell Avenue, East Olden Street and Third Street will be prohibited. See attached map, EXHIBIT A.

BE IT ORDAINED BY THE CITY COUNCIL OF THE CITY OF WEST PLAINS, MISSOURI AS FOLLOWS:

Section 1: That parking of motor vehicles on Howell Avenue from Olden Street south to Bratton Avenue, East Olden Street 325 feet West of Howell Avenue, Third Street 325 feet West of Howell Avenue, and East Olden Street from Howell Avenue to Davidson Street will be prohibited. Exhibit A shows the map of exact perimeters.

Section 2: That any person violating the provisions of this Ordinance shall be deemed guilty of a misdemeanor and upon conviction shall be fined according to municipal court guidelines.

Section 3: That all Ordinances or parts of Ordinances therefore enacted which are in conflict herewith are hereby repealed and replaced.

Section 4: This Ordinance shall be in full force and from and after its passage and approval.

PASSED AND APPROVED THIS ____ DAY OF NOVEMBER 2023.

CITY OF WEST PLAINS, MISSOURI

BY: _____
MICHAEL TOPLIFF, MAYOR

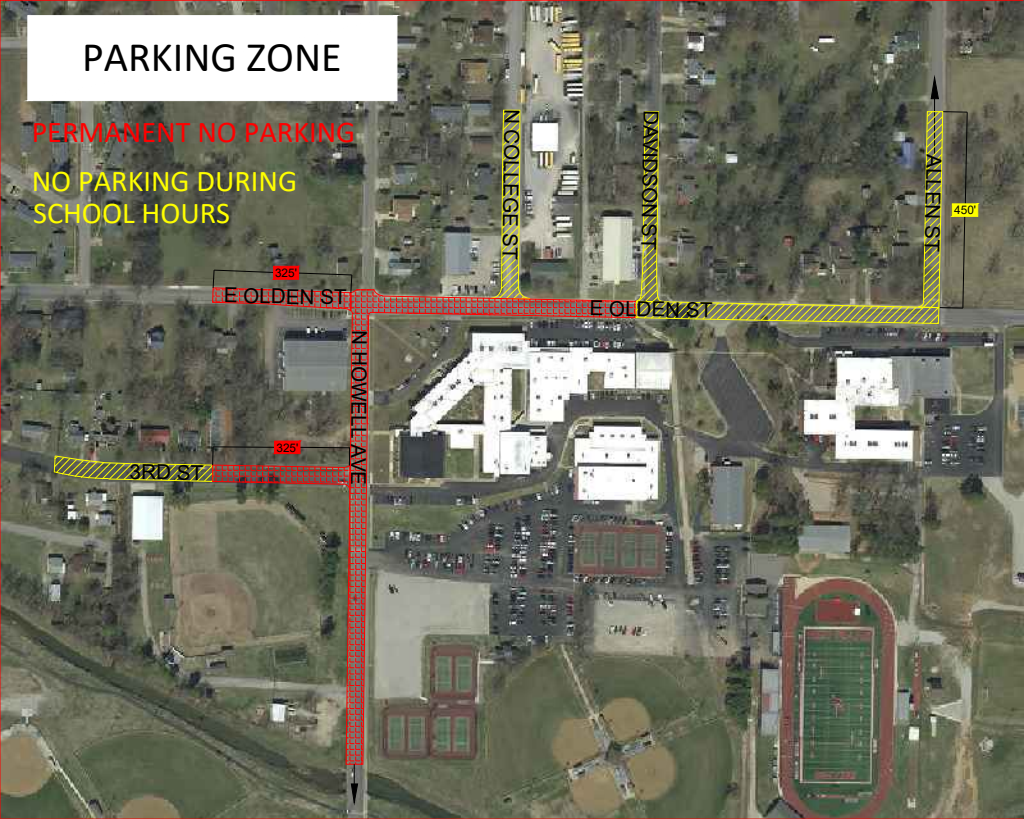
ATTEST:

ALLISON SKINNER, CITY CLERK

PARKING ZONE

PERMANENT NO PARKING

NO PARKING DURING SCHOOL HOURS



325
E OLDEN ST

N COLLEGE ST

DAVIDSON ST

ALLEN ST

450

E OLDEN ST

E OLDEN ST

325

3RD ST

N HOWELL AVE

